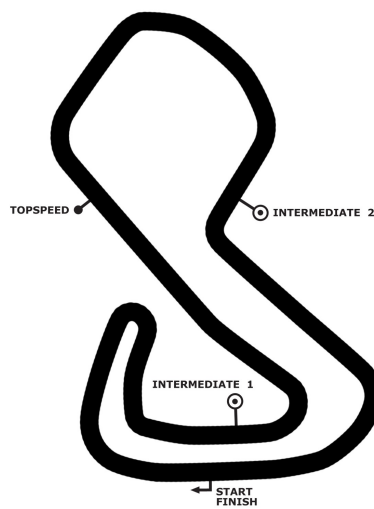


DTM

DTM Brands Hatch

free practice



Brands Hatch GP Circuit 3916 m

10. & 11.08.2019

DTM Brands Hatch

Brands Hatch GP Circuit, length 3916 m

10. & 11.08.2019

DTM



DTM

Result free practice, 10.08.2019

-Reg.No.: 111506

RK	No	DRIVER/ENTRANT	CAR	TIME	Lap	%	GAP	DIFF	km/h	Time
1	4	Robin Frijns (NLD) Audi Sport Team Abt Sportsline	Aral Ultimate Audi RS 5 DTM	1:16.318	25	100.00			184.7	9:12:59
2	28	Loic Duval (FRA) Audi Sport Team Phoenix	MASCOT WORKWEAR Audi RS 5 DTM	1:16.450	24	100.17	00.132	00.132	184.4	9:11:45
3	11	Marco Wittmann (DEU) BMW Team RMG	Schaeffler BMW M4 DTM	1:16.553	18	100.31	00.235	00.103	184.1	9:10:40
4	16	Timo Glock (DEU) BMW Team RMR	JIVS BMW M4 DTM	1:17.085	20	101.01	00.767	00.532	182.8	9:10:45
5	51	Nico Müller (CHE) Audi Sport Team Abt Sportsline	Castrol EDGE Audi RS 5 DTM	1:17.190	24	101.14	00.872	00.105	182.6	9:14:23
6	99	Mike Rockenfeller (DEU) Audi Sport Team Phoenix	Akrapovic Audi RS 5 DTM	1:17.196	24	101.15	00.878	00.006	182.6	9:10:51
7	27	Jonathan Aberdein (RSA) WRT Team Audi Sport	WRT Audi RS 5 DTM	1:17.295	23	101.28	00.977	00.099	182.3	9:15:08
8	31	Sheldon Van der Linde (RSA) BMW Team RBM	Shell BMW M4 DTM	1:17.303	25	101.29	00.985	00.008	182.3	9:13:25
9	23	Daniel Juncadella (ESP) R-Motorsport 2	Aston Martin Vantage DTM	1:17.372	22	101.38	01.054	00.069	182.2	9:18:14
10	7	Bruno Spengler (CAN) BMW Team RMG	BMW Bank M4 DTM	1:17.456	27	101.49	01.138	00.084	182.0	9:16:17
11	3	Paul Di Resta (GBR) R-Motorsport 1	Aston Martin Vantage DTM	1:17.553	25	101.62	01.235	00.097	181.7	9:15:27
12	76	Jake Dennis (GBR) R-Motorsport 1	Aston Martin Vantage DTM	1:17.599	25	101.68	01.281	00.046	181.6	9:14:33
13	33	René Rast (DEU) Audi Sport Team Rosberg	Audi Sport RS 5 DTM	1:17.604	25	101.69	01.286	00.005	181.6	9:12:13
14	25	Philipp Eng (AUT) BMW Team RMR	ZF BMW M4 DTM	1:17.637	23	101.73	01.319	00.033	181.5	9:11:37
15	47	Joel Eriksson (SWE) BMW Team RBM	CATL BMW M4 DTM	1:17.657	17	101.75	01.339	00.020	181.5	9:16:06
16	21	Pietro Fittipaldi (BRA) WRT Team Audi Sport	WRT Audi RS 5 DTM	1:17.734	26	101.86	01.416	00.077	181.3	9:10:16
17	53	Jamie Green (GBR) Audi Sport Team Rosberg	Hoffmann Group Audi RS 5 DTM	1:17.840	26	101.99	01.522	00.106	181.1	9:12:40
18	62	Ferdinand von Habsburg (AUT) R-Motorsport 2	Aston Martin Vantage DTM	1:18.975	19	103.48	02.657	01.135	178.5	9:18:01

Subject to final scrutineering !

Issued:

Clerk of the Course:

Timekeeper:

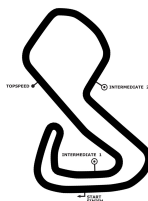


DTM Brands Hatch

Brands Hatch GP Circuit, length 3916 m

10. & 11.08.2019

DTM



Lap by Lap free practice, 10.08.2019

-Reg.No.: 111506

3 Paul Di Resta , Aston Martin Vantage DTM / GBR															
1	2:21.058	pit	2:28.313	pit	2:02.094	4	2:00.105	5	1:23.402	6	1:19.027	7	1:17.899	8	1:18.124
9	1:17.553	10	1:18.083	11	1:18.518	12	1:18.887	13	1:18.934	14	1:19.729	15	1:20.004	16	1:20.463
17	1:19.795	pit	9:23.073	19	1:50.267	20	1:37.377	21	1:35.417	22	1:32.362	23	1:55.975	24	2:08.729
25	2:50.129														

4 Robin Frijns , Aral Ultimate Audi RS 5 DTM / NLD															
1	1:52.966	pit	2:29.799	pit	2:45.067	4	1:47.193	5	1:30.434	6	1:17.443	7	1:16.318	8	1:17.105
9	1:17.228	10	1:18.771	11	1:18.364	12	1:19.257	pit	3:12.599	14	1:41.465	15	1:23.002	pit	6:08.381
17	1:52.051	18	1:36.076	19	1:36.478	20	1:33.992	21	1:33.423	22	1:32.335	23	1:57.115	24	2:13.508
25	2:16.969														

7 Bruno Spengler , BMW Bank M4 DTM / CAN															
pit	3:00.106	pit	2:22.065	3	1:44.132	4	1:22.654	5	1:19.716	6	1:18.181	7	1:17.538	8	1:17.860
9	1:17.703	10	1:17.456	11	1:17.805	12	1:19.411	13	1:19.221	14	1:20.963	15	1:21.822	16	1:20.545
17	1:20.641	18	1:27.769	19	1:40.867	pit	6:23.088	21	1:59.737	22	1:39.107	23	1:34.844	24	1:33.003
25	1:57.035	26	2:08.542	27	2:36.788										

11 Marco Wittmann , Schaeffler BMW M4 DTM / DEU															
1	5:22.865	2	1:25.702	3	1:18.131	4	1:16.979	5	1:16.553	pit	1:42.840	pit	9:25.424	8	1:51.396
9	1:18.601	10	1:19.187	pit	8:01.016	12	1:58.215	13	1:38.169	14	1:34.556	15	1:32.544	16	1:31.338
17	2:03.186	18	2:39.529												

16 Timo Glock , JIVS BMW M4 DTM / DEU															
pit	2:20.623	2	1:44.885	3	1:25.169	4	1:21.341	5	1:18.391	6	1:17.334	7	1:17.085	pit	1:48.092
pit	9:33.810	10	1:36.405	11	1:18.876	12	1:18.942	pit	8:41.114	14	2:04.451	15	1:37.346	16	1:33.648
17	1:32.125	18	1:55.594	19	2:13.716	20	2:22.728								

21 Pietro Fittipaldi , WRT Audi RS 5 DTM / BRA															
pit	3:03.567	2	1:45.459	3	1:28.456	4	1:20.677	5	1:20.586	6	1:17.734	7	1:18.196	8	1:19.236
9	1:18.194	10	1:18.480	11	1:18.295	12	1:18.994	13	1:18.951	14	1:20.076	15	1:22.169	16	1:21.780
17	1:22.317	18	1:22.275	pit	9:43.810	20	1:55.961	21	1:37.438	22	1:33.221	23	1:32.257	24	2:07.250
25	2:10.670	26	3:04.748												

23 Daniel Juncadella , Aston Martin Vantage DTM / ESP															
1	2:18.374	pit	5:23.317	pit	2:03.144	4	1:47.043	5	1:25.414	6	1:18.124	7	1:17.652	8	1:23.443
9	1:17.372	10	1:17.932	11	1:20.934	12	1:20.570	13	1:20.334	14	1:19.681	15	1:20.056	pit	10:54.670
17	1:50.375	18	1:36.323	19	1:34.452	20	1:54.171	21	2:06.831	22	3:04.005				

25 Philipp Eng , ZF BMW M4 DTM / AUT															
pit	3:07.928	2	1:56.539	3	1:21.712	4	1:18.033	5	1:17.666	6	1:17.845	7	1:17.637	8	1:17.716
9	1:18.043	10	1:18.386	11	1:19.432	12	1:19.410	13	1:20.972	pit	12:17.673	15	2:04.520	16	1:37.236
17	1:36.593	18	1:34.306	19	1:33.066	20	1:31.783	21	1:57.019	22	2:14.344	23	2:24.492		

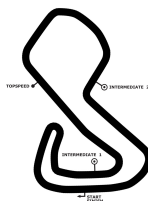
27 Jonathan Aberdein , WRT Audi RS 5 DTM / RSA															
pit	3:59.823	2	1:47.790	3	1:26.941	4	1:21.300	5	1:19.257	6	1:19.336	7	1:17.331	8	1:19.223
9	1:17.295	10	1:17.529	pit	1:35.446	12	1:27.257	13	1:19.067	14	1:20.541	15	1:21.271	16	1:19.541
17	1:21.193	pit	11:35.068	19	1:58.350	20	1:39.792	21	1:58.716	22	2:13.051	23	2:32.432		

DTM Brands Hatch

Brands Hatch GP Circuit, length 3916 m

10. & 11.08.2019

DTM



DTM

Lap by Lap free practice, 10.08.2019

-Reg.No.: 111506

28 Loic Duval , MASCOT WORKWEAR Audi RS 5 DTM / FRA															
pit	3:29.265	2	1:39.197	3	1:21.273	4	1:16.998	5	1:16.464	6	1:25.535	7	1:16.450	pit	5:51.862
9	1:28.976	10	1:17.420	11	1:18.787	12	1:18.889	13	1:19.098	14	1:19.047	15	1:23.041	pit	7:08.491
17	1:58.133	18	1:38.771	19	1:35.510	20	1:33.469	21	1:31.818	22	2:00.999	23	2:07.711	24	3:06.518

31 Sheldon Van der Linde , Shell BMW M4 DTM / RSA															
pit	3:05.189	pit	2:01.311	3	1:46.417	4	1:20.473	5	1:18.434	6	1:17.942	7	1:17.684	8	1:17.303
9	1:18.088	10	1:17.935	11	1:19.490	12	1:19.296	13	1:19.770	14	1:20.206	15	1:20.580	16	1:20.174
17	1:20.338	18	1:21.862	pit	10:14.980	20	1:57.385	21	1:37.404	22	1:33.001	23	1:54.745	24	2:07.612
25	2:47.176														

33 René Rast , Audi Sport RS 5 DTM / DEU															
1	1:46.046	pit	1:57.898	pit	2:07.437	pit	1:59.313	5	1:45.983	6	1:18.763	7	1:17.604	8	1:18.159
9	1:21.423	10	1:18.041	11	1:18.869	12	1:18.731	13	1:18.938	14	1:19.451	15	1:20.072	16	1:20.076
17	1:20.248	pit	10:04.203	19	1:53.187	20	1:37.324	21	1:35.492	22	1:32.429	pit	2:08.726	24	2:10.108
25	2:45.652														

47 Joel Eriksson , CATL BMW M4 DTM / SWE															
pit	6:41.168	pit	2:08.600	3	1:57.697	4	1:23.300	5	1:19.118	6	1:18.427	7	1:17.657	8	1:19.026
9	1:18.536	10	1:18.625	11	1:19.487	12	1:20.955	pit	1:36.906	14	1:30.590	pit	10:35.974	16	1:59.111
17	1:40.643														

51 Nico Müller , Castrol EDGE Audi RS 5 DTM / CHE															
pit	2:27.163	pit	2:05.658	3	1:59.619	4	1:20.700	5	1:18.782	6	1:17.406	7	1:19.199	8	1:17.194
9	1:17.190	10	1:17.826	11	1:18.261	12	1:18.817	13	1:19.412	pit	5:04.545	15	1:43.638	pit	6:59.412
17	1:52.603	18	1:39.547	19	1:36.453	20	1:36.224	21	1:33.426	pit	2:07.903	23	2:11.699	24	2:33.685

53 Jamie Green , Hoffmann Group Audi RS 5 DTM / GBR															
pit	3:02.276	2	1:40.425	3	1:21.839	4	1:19.550	5	1:21.417	6	1:18.997	7	1:18.167	8	1:17.840
9	1:18.872	10	1:18.032	11	1:18.479	12	1:19.049	13	1:21.355	14	1:20.827	15	1:21.556	16	1:22.027
17	1:22.274	18	1:21.217	pit	8:10.746	20	1:56.297	21	1:41.260	22	1:35.100	23	1:50.987	24	1:36.273
pit	2:15.749	26	2:21.995												

62 Ferdinand von Habsburg , Aston Martin Vantage DTM / AUT															
1	2:33.320	pit	4:42.314	pit	2:05.172	4	1:55.196	5	1:24.073	6	1:22.199	7	1:20.154	8	1:19.359
9	1:18.975	10	1:19.488	11	1:20.055	12	1:22.585	13	1:21.630	14	1:20.477	15	1:19.966	pit	10:05.145
17	1:57.589	18	1:42.009	19	1:37.321										

76 Jake Dennis , Aston Martin Vantage DTM / GBR															
1	3:07.495	pit	2:12.346	pit	2:04.762	4	1:50.351	5	1:22.875	6	1:19.150	7	1:18.420	8	1:17.599
9	1:18.223	10	1:18.466	11	1:18.804	12	1:18.767	13	1:21.457	14	1:20.988	15	1:20.873	16	1:20.322
17	1:20.929	pit	8:47.293	19	2:00.374	20	1:45.775	21	1:40.169	22	1:34.468	23	2:03.012	24	2:09.829
25	2:55.679														

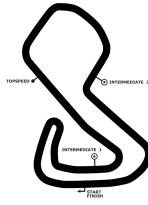
99 Mike Rockenfeller , Akrapovic Audi RS 5 DTM / DEU															
pit	2:26.418	2	1:44.767	3	1:26.203	4	1:20.644	5	1:18.682	6	1:17.320	7	1:17.196	pit	6:18.902
9	1:28.064	10	1:18.335	11	1:19.224	12	1:20.003	13	1:19.618	14	1:18.970	15	1:19.737	pit	7:32.991
17	1:56.379	18	1:39.443	19	1:36.386	20	1:33.728	21	1:31.800	22	2:03.822	23	2:07.456	24	2:52.093

DTM Brands Hatch

Brands Hatch GP Circuit, length 3916 m

10. & 11.08.2019

DTM



-Reg.No.: 111506

Lap Analysis free practice, 10.08.2019

3 Paul Di Resta , Aston Martin Vantage DTM / GBR									theoretical besttime: 1:17.445								
Lap	Time	S1	V1	S2	V2	S3	V3	Vmax	Lap	Time	S1	V1	S2	V2	S3	V3	Vmax
1	2:21.058		134	47.585	120	25.121	211	198	14	1:19.729	25.627	201	35.064	182	19.038	241	252
2	2:28.313	33.306	154	43.653	132			198	15	1:20.004	25.884	199	35.058	180	19.062	242	251
3	2:02.094	40.189	161	41.503	126			215	16	1:20.463	25.922	201	35.393	163	19.148	241	257
4	2:00.105	1:02.883	181	36.902	160	20.320	238	245	17	1:19.795	25.788	202	34.810	188	19.197	241	257
5	1:23.402	27.658	189	36.347	163	19.397	245	250	18	9:23.073	26.639	202	37.644	157			258
6	1:19.027	25.549	202	34.690	179	18.788	246	252	19	1:50.267	43.091	151	44.076	144	23.100	227	206
7	1:17.899	24.870	202	34.340	180	18.689	246	253	20	1:37.377	32.090	178	42.558	151	22.729	230	225
8	1:18.124	25.177	203	34.268	181	18.679	245	253	21	1:35.417	31.621	175	41.205	157	22.591	230	238
9	1:17.553	24.978	202	34.063	185	18.512	244	252	22	1:32.362	30.753	184	39.605	151	22.004	232	244
10	1:18.083	25.088	204	34.245	184	18.750	243	252	23	1:55.975	30.846	181	41.303	141	43.826	78	240
11	1:18.518	25.294	203	34.420	184	18.804	247	252	24	2:08.729	44.384	180	40.672	153	43.673	79	241
12	1:18.887	25.474	201	34.591	182	18.822	244	252	25	2:50.129	44.316	176	43.838	141	1:21.975	85	206
13	1:18.934	25.479	201	34.530	185	18.925	244	254									

4 Robin Frijns , Aral Ultimate Audi RS 5 DTM / NLD									theoretical besttime: 1:16.273								
Lap	Time	S1	V1	S2	V2	S3	V3	Vmax	Lap	Time	S1	V1	S2	V2	S3	V3	Vmax
1	1:52.966		161	41.755	139	21.038	243	158	14	1:41.465	41.064	156	40.294	151	20.107	242	225
2	2:29.799	28.053	194	38.070	144			251	15	1:23.002	28.186	199	35.833	172	18.983	247	253
3	2:45.067	42.656	147	46.816	124			188	16	6:08.381	25.102	204	40.767	137			228
4	1:47.193	43.366	144	43.297	135	20.530	246	220	17	1:52.051	44.076	153	44.661	133	23.314	235	181
5	1:30.434	27.250	198	38.377	159	24.807	249	187	18	1:36.076	31.899	179	41.495	141	22.682	231	220
6	1:17.443	25.257	204	33.891	186	18.295	251	257	19	1:36.478	32.423	170	41.666	146	22.389	234	220
7	1:16.318	24.583	207	33.395	190	18.340	247	256	20	1:33.992	31.307	186	40.435	146	22.250	237	231
8	1:17.105	24.931	206	33.849	188	18.325	248	257	21	1:33.423	31.169	187	40.257	151	21.997	236	244
9	1:17.228	24.941	204	33.702	187	18.585	249	257	22	1:32.335	30.987	188	39.462	157	21.886	235	239
10	1:18.771	26.063	204	34.299	189	18.409	250	256	23	1:57.115	31.315	184	42.440	136	43.360	78	238
11	1:18.364	25.349	203	34.340	187	18.675	249	258	24	2:13.508	44.774	152	45.608	143	43.126	78	175
12	1:19.257	26.111	200	34.641	184	18.505	248	256	25	2:16.969	45.185	173	43.844	131	47.940		177
13	3:12.599	25.703	203	34.733	171			258									

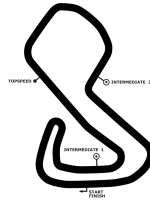
7 Bruno Spengler , BMW Bank M4 DTM / CAN									theoretical besttime: 1:17.269								
Lap	Time	S1	V1	S2	V2	S3	V3	Vmax	Lap	Time	S1	V1	S2	V2	S3	V3	Vmax
1	3:00.106		142	47.609	116			174	15	1:21.822	26.009	202	36.602	172	19.211	244	234
2	2:22.065	52.250	171	40.138	142			214	16	1:20.545	26.281	202	35.289	181	18.975	244	253
3	1:44.132	43.887	170	40.009	149	20.236	240	209	17	1:20.641	26.173	201	35.493	179	18.975	247	260
4	1:22.654	26.819	194	36.668	167	19.167	245	247	18	1:27.769	26.328	201	40.003	141	21.438	240	214
5	1:19.716	25.474	203	35.567	179	18.675	246	252	19	1:40.867	29.337	158	46.375	126	25.155	186	171
6	1:18.181	25.104	203	34.614	176	18.463	247	254	20	6:23.088	37.301	133	59.016	99			139
7	1:17.538	24.809	204	34.278	188	18.451	248	254	21	1:59.737	48.160	147	47.099	121	24.478	226	201
8	1:17.860	25.020	204	34.436	187	18.404	246	254	22	1:39.107	32.964	163	42.816	142	23.327	228	216
9	1:17.703	25.159	204	34.133	189	18.411	246	254	23	1:34.844	31.725	180	40.863	146	22.256	231	224
10	1:17.456	24.996	204	34.060	190	18.400	246	254	24	1:33.003	31.006	184	40.128	154	21.869	235	240
11	1:17.805	25.214	204	34.151	192	18.440	248	254	25	1:57.035	32.806	179	40.750	127	43.479	79	237
12	1:19.411	26.124	203	34.683	186	18.604	246	255	26	2:08.542	44.255	172	40.734	142	43.553	79	234
13	1:19.221	25.769	201	34.645	190	18.807	247	255	27	2:36.788	44.006	174	40.860	147	1:11.922	75	241
14	1:20.963	25.927	202	35.716	172	19.320	246	254									

DTM Brands Hatch

Brands Hatch GP Circuit, length 3916 m

10. & 11.08.2019

DTM



-Reg.No.: 111506

Lap Analysis free practice, 10.08.2019

11 Marco Wittmann , Schaeffler BMW M4 DTM / DEU									theoretical besttime: 1:16.431								
Lap	Time	S1	V1	S2	V2	S3	V3	Vmax	Lap	Time	S1	V1	S2	V2	S3	V3	Vmax
1	5:22.865		146	42.792	126	21.480	239	216	10	1:19.187	25.329	201	35.008	183	18.850	243	252
2	1:25.702	28.523	187	37.560	148	19.619	244	246	11	8:01.016	25.610	200	41.222	137			243
3	1:18.131	25.401	202	34.281	184	18.449	247	254	12	1:58.215	43.999	141	44.980	129	29.236	227	195
4	1:16.979	24.809	202	33.750	194	18.420	246	254	13	1:38.169	32.152	176	42.541	131	23.476	226	211
5	1:16.553	24.931	201	33.487	185	18.135	248	255	14	1:34.556	31.385	175	40.907	143	22.264	231	230
6	1:42.840	24.979	203	33.744	187			255	15	1:32.544	30.955	185	39.540	150	22.049	233	241
7	9:25.424	37.767	191	36.226	163			250	16	1:31.338	30.204	184	39.174	156	21.960	235	247
8	1:51.396	55.250	174	36.965	162	19.181	243	248	17	2:03.186	39.774	181	40.373	144	43.039	78	230
9	1:18.601	25.689	199	34.304	183	18.608	244	252	18	2:39.529	44.732	161	43.766	103	1:11.031	4	225

16 Timo Glock , JIVS BMW M4 DTM / DEU									theoretical besttime: 1:17.085								
Lap	Time	S1	V1	S2	V2	S3	V3	Vmax	Lap	Time	S1	V1	S2	V2	S3	V3	Vmax
1	2:20.623		148	45.511	119			224	11	1:18.876	25.563	200	34.601	181	18.712	244	251
2	1:44.885	41.014	160	42.251	134	21.620	240	206	12	1:18.942	25.218	200	34.853	178	18.871	243	251
3	1:25.169	28.384	195	37.259	150	19.526	246	245	13	8:41.114	25.485	203	39.326	134			250
4	1:21.341	26.929	202	35.344	169	19.068	246	252	14	2:04.451	56.120	148	44.991	134	23.340	231	195
5	1:18.391	25.657	203	34.204	184	18.530	247	255	15	1:37.346	33.208	173	41.555	145	22.583	229	233
6	1:17.334	25.019	203	33.878	187	18.437	246	254	16	1:33.648	31.054	182	40.405	154	22.189	233	240
7	1:17.085	24.967	202	33.775	184	18.343	248	255	17	1:32.125	30.913	187	39.202	152	22.010	234	245
8	1:48.092	25.878	199	35.957	166			252	18	1:55.594	30.599	181	41.102	76	43.893	79	244
9	9:33.810	38.814	190	38.309	156			239	19	2:13.716	43.401	182	40.154	113	50.161	52	244
10	1:36.405	39.691	175	37.440	164	19.274	242	247	20	2:22.728	43.856	171	40.178	141	58.694		245

21 Pietro Fittipaldi , WRT Audi RS 5 DTM / BRA									theoretical besttime: 1:17.574								
Lap	Time	S1	V1	S2	V2	S3	V3	Vmax	Lap	Time	S1	V1	S2	V2	S3	V3	Vmax
1	3:03.567		143	52.580	101			157	14	1:20.076	25.919	200	35.106	179	19.051	246	255
2	1:45.459	41.087	167	42.587	121	21.785	241	229	15	1:22.169	25.973	202	36.776	172	19.420	243	238
3	1:28.456	29.131	188	38.110	143	21.215	241	242	16	1:21.780	26.854	199	35.799	182	19.127	246	256
4	1:20.677	25.893	202	35.482	166	19.302	245	255	17	1:22.317	26.830	191	36.144	180	19.343	246	255
5	1:20.586	25.200	203	35.994	168	19.392	246	256	18	1:22.275	27.096	201	35.575	180	19.604	242	255
6	1:17.734	24.994	204	34.238	188	18.502	248	255	19	9:43.810	26.567	198	43.174	133			240
7	1:18.196	24.865	206	34.512	184	18.819	249	256	20	1:55.961	46.483	154	44.687	125	24.791	221	221
8	1:19.236	25.089	204	34.868	151	19.279	246	257	21	1:37.438	32.849	179	41.574	141	23.015	230	244
9	1:18.194	25.258	205	34.225	188	18.711	246	257	22	1:33.221	30.937	187	40.266	148	22.018	232	246
10	1:18.480	25.176	201	34.505	192	18.799	246	261	23	1:32.257	30.970	181	39.479	147	21.808	237	248
11	1:18.295	25.352	204	34.207	192	18.736	246	255	24	2:07.250	42.408	183	41.130	115	43.712	79	244
12	1:18.994	25.519	201	34.577	188	18.898	246	254	25	2:10.670	44.115	183	42.858	121	43.697	81	233
13	1:18.951	25.607	199	34.553	187	18.791	251	261	26	3:04.748	33.431	177	44.041	106	1:47.276	80	237

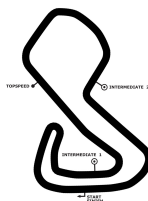
23 Daniel Juncadella , Aston Martin Vantage DTM / ESP									theoretical besttime: 1:17.206								
Lap	Time	S1	V1	S2	V2	S3	V3	Vmax	Lap	Time	S1	V1	S2	V2	S3	V3	Vmax
1	2:18.374		137	47.139	104	30.017	180	182	12	1:20.570	25.431	201	36.020	166	19.119	243	250
2	5:23.317	32.148	161	42.568	117			214	13	1:20.334	26.113	200	35.339	175	18.882	242	252
3	2:03.144	43.093	160	40.986	111			216	14	1:19.681	25.700	200	34.968	176	19.013	251	252
4	1:47.043	50.044	184	36.948	143	20.051	244	240	15	1:20.056	25.961	201	35.199	176	18.896	242	259
5	1:25.414	25.961	199	39.076	125	20.377	244	148	16	10:54.670	26.187	199	40.052	130			233
6	1:18.124	25.206	202	34.344	177	18.574	244	252	17	1:50.375	42.950	160	44.155	130	23.270	227	211
7	1:17.652	24.796	200	34.008	180	18.848	248	253	18	1:36.323	31.802	175	41.551	143	22.970	226	232
8	1:23.443	26.031	201	37.985	160	19.427	247	221	19	1:34.452	30.917	178	41.254	145	22.281	231	235
9	1:17.372	24.962	203	33.957	182	18.453	245	253	20	1:54.171	30.728	182	40.642	138	42.801	79	241
10	1:17.932	25.172	203	34.195	175	18.565	251	259	21	2:06.831	44.048	177	40.009	147	42.774	78	243
11	1:20.934	26.006	201	35.593	154	19.335	252	259	22	3:04.005	44.421	177	41.439	101	1:38.145	45	240

DTM Brands Hatch

Brands Hatch GP Circuit, length 3916 m

10. & 11.08.2019

DTM



DTM

Lap Analysis free practice, 10.08.2019

-Reg.No.: 111506

25 Philipp Eng , ZF BMW M4 DTM / AUT										theoretical besttime: 1:17.312							
Lap	Time	S1	V1	S2	V2	S3	V3	Vmax	Lap	Time	S1	V1	S2	V2	S3	V3	Vmax
1	3:07.928		140	48.096	129			175	13	1:20.972	26.281	199	35.744	182	18.947	249	256
2	1:56.539	57.780	179	38.843	155	19.916	246	235	14	12:17.673	26.374	192	36.638	170			254
3	1:21.712	26.549	197	36.305	177	18.858	246	249	15	2:04.520	58.018	164	43.157	135	23.345	227	211
4	1:18.033	25.189	203	34.309	183	18.535	246	254	16	1:37.236	32.275	178	42.377	136	22.584	230	233
5	1:17.666	25.053	203	34.008	192	18.605	246	254	17	1:36.593	31.759	179	42.011	139	22.823	234	230
6	1:17.845	25.190	203	34.296	184	18.359	248	254	18	1:34.306	31.565	182	40.731	145	22.010	234	238
7	1:17.637	24.945	203	34.156	191	18.536	247	254	19	1:33.066	30.976	182	40.419	150	21.671	236	244
8	1:17.716	25.011	203	34.163	187	18.542	247	255	20	1:31.783	30.256	187	39.749	148	21.778	236	247
9	1:18.043	25.304	203	34.220	183	18.519	246	255	21	1:57.019	30.841	182	41.231	103	44.947	79	247
10	1:18.386	25.434	201	34.320	188	18.632	246	254	22	2:14.344	43.756	183	40.628	126	49.960	50	245
11	1:19.432	25.785	201	34.930	179	18.717	245	254	23	2:24.492	44.835	179	39.909	145	59.748		246
12	1:19.410	25.836	202	34.723	186	18.851	246	254									

27 Jonathan Aberdein , WRT Audi RS 5 DTM / RSA										theoretical besttime: 1:17.190							
Lap	Time	S1	V1	S2	V2	S3	V3	Vmax	Lap	Time	S1	V1	S2	V2	S3	V3	Vmax
1	3:59.823		147	44.831	112			204	13	1:19.067	25.626	203	34.712	189	18.729	251	262
2	1:47.790	42.750	143	43.863	127	21.177	242	181	14	1:20.541	25.704	202	35.846	172	18.991	244	262
3	1:26.941	28.871	179	38.343	147	19.727	244	245	15	1:21.271	26.660	199	35.730	174	18.881	249	248
4	1:21.300	26.481	194	35.596	168	19.223	245	257	16	1:19.541	25.750	202	35.009	183	18.782	245	255
5	1:19.257	25.535	202	34.846	173	18.876	247	257	17	1:21.193	26.109	201	35.977	179	19.107	243	258
6	1:19.336	25.241	203	35.134	165	18.961	247	258	18	11:35.068	26.567	199	40.291	137			233
7	1:17.331	24.874	204	33.966	188	18.491	247	256	19	1:58.350	46.828	149	47.255	123	24.267	223	207
8	1:19.223	26.285	203	34.444	180	18.494	247	256	20	1:39.792	33.146	164	43.712	135	22.934	229	216
9	1:17.295	24.953	202	33.992	188	18.350	248	255	21	1:58.716	32.335	182	42.271	106	44.110	78	233
10	1:17.529	24.934	206	34.227	188	18.368	247	255	22	2:13.051	45.694	177	43.576	113	43.781	79	227
11	1:35.446	25.310	202	35.125	174			255	23	2:32.432	47.415	158	46.224	122	58.793		186
12	1:27.257	33.848	201	34.813	181	18.596	248	255									

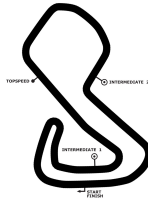
28 Loic Duval , MASCOT WORKWEAR Audi RS 5 DTM / FRA										theoretical besttime: 1:16.366							
Lap	Time	S1	V1	S2	V2	S3	V3	Vmax	Lap	Time	S1	V1	S2	V2	S3	V3	Vmax
1	3:29.265		149	47.552	121			178	13	1:19.098	25.785	203	34.615	188	18.698	246	254
2	1:39.197	40.322	183	38.732	153	20.143	242	235	14	1:19.047	25.691	202	34.601	181	18.755	244	257
3	1:21.273	26.849	198	35.477	159	18.947	249	253	15	1:23.041	25.872	202	36.632	150	20.537	242	255
4	1:16.998	24.956	206	33.741	180	18.301	250	257	16	7:08.491	28.798	171	42.924	135			200
5	1:16.464	24.843	205	33.432	191	18.189	251	257	17	1:58.133	44.930	145	43.938	126	29.265	225	212
6	1:25.535	24.817	204	37.412	126	23.306	250	258	18	1:38.771	33.280	159	42.469	142	23.022	233	219
7	1:16.450	24.886	206	33.447	193	18.117	251	258	19	1:35.510	31.575	175	41.402	148	22.533	231	229
8	5:51.862	27.035	193	37.328	151			232	20	1:33.469	31.061	179	40.401	145	22.007	234	244
9	1:28.976	34.997	196	35.009	175	18.970	246	254	21	1:31.818	30.689	183	39.308	150	21.821	235	241
10	1:17.420	25.072	204	33.944	190	18.404	247	257	22	2:00.999	33.988	179	41.718	82	45.293	78	239
11	1:18.787	25.412	201	34.662	184	18.713	246	254	23	2:07.711	45.591	151	42.348	110	39.772	139	223
12	1:18.889	25.541	202	34.625	177	18.723	246	254	24	3:06.518	37.209	136	51.046	111	1:38.263	76	138

DTM Brands Hatch

Brands Hatch GP Circuit, length 3916 m

10. & 11.08.2019

DTM



-Reg.No.: 111506

Lap Analysis free practice, 10.08.2019

31 Sheldon Van der Linde , Shell BMW M4 DTM / RSA									theoretical besttime: 1:17.242								
Lap	Time	S1	V1	S2	V2	S3	V3	Vmax	Lap	Time	S1	V1	S2	V2	S3	V3	Vmax
1	3:05.189		137	47.461	112			178	14	1:20.206	25.973	199	35.062	176	19.171	246	252
2	2:01.311	42.319	147	41.249	136			203	15	1:20.580	25.829	201	35.331	179	19.420	245	257
3	1:46.417	48.209	185	37.642	153	20.566	242	246	16	1:20.174	26.253	199	34.772	181	19.149	246	260
4	1:20.473	26.351	198	35.261	172	18.861	245	251	17	1:20.338	26.215	199	34.981	181	19.142	246	260
5	1:18.434	25.254	202	34.489	179	18.691	244	252	18	1:21.862	26.107	199	35.715	169	20.040	241	262
6	1:17.942	25.341	200	34.077	182	18.524	247	254	19	10:14.980	29.276	172	43.050	148			179
7	1:17.684	25.092	202	33.921	177	18.671	245	253	20	1:57.385	46.188	143	47.343	135	23.854	223	184
8	1:17.303	24.928	203	33.790	186	18.585	246	252	21	1:37.404	32.803	168	41.484	145	23.117	230	231
9	1:18.088	25.233	201	34.172	183	18.683	245	252	22	1:33.001	31.253	183	39.455	152	22.293	234	242
10	1:17.935	25.173	203	34.150	188	18.612	245	251	23	1:54.745	30.680	188	39.838	133	44.227	79	238
11	1:19.490	25.837	196	34.801	183	18.852	247	252	24	2:07.612	43.960	173	40.208	143	43.444	79	232
12	1:19.296	25.633	201	34.613	181	19.050	244	254	25	2:47.176	43.856	175	43.151	124	1:20.169	76	232
13	1:19.770	26.169	199	34.644	183	18.957	244	254									

33 René Rast , Audi Sport RS 5 DTM / DEU									theoretical besttime: 1:17.480								
Lap	Time	S1	V1	S2	V2	S3	V3	Vmax	Lap	Time	S1	V1	S2	V2	S3	V3	Vmax
1	1:46.046		156	41.804	141	21.064	239	221	14	1:19.451	25.689	202	34.851	191	18.911	246	255
2	1:57.898	29.824	181	40.299	146			247	15	1:20.072	25.605	204	35.463	188	19.004	243	254
3	2:07.437	39.645	168	40.247	151			236	16	1:20.076	25.744	202	35.368	186	18.964	249	255
4	1:59.313	40.903	181	38.578	155			249	17	1:20.248	26.040	201	35.228	186	18.980	243	263
5	1:45.983	48.124	102	38.813	174	19.046	244	212	18	10:04.203	26.100	202	36.055	172			255
6	1:18.763	25.587	200	34.528	185	18.648	248	258	19	1:53.187	44.322	130	45.137	129	23.728	231	218
7	1:17.604	25.077	203	34.062	193	18.465	245	257	20	1:37.324	31.776	172	42.698	132	22.850	233	238
8	1:18.159	25.159	204	34.478	184	18.522	246	256	21	1:35.492	31.933	173	41.276	141	22.283	233	229
9	1:21.423	25.075	204	37.766	187	18.582	246	256	22	1:32.429	30.606	181	39.760	149	22.063	236	248
10	1:18.041	24.953	205	34.487	192	18.601	245	255	23	2:08.726	33.034	168	41.234	134			242
11	1:18.869	25.383	203	34.832	188	18.654	247	255	24	2:10.108	45.917	183	41.219	141	42.972	79	241
12	1:18.731	25.347	203	34.656	189	18.728	244	255	25	2:45.652	34.256	175	41.800	130	1:29.596	61	245
13	1:18.938	25.630	201	34.674	186	18.634	246	257									

47 Joel Eriksson , CATL BMW M4 DTM / SWE									theoretical besttime: 1:17.639								
Lap	Time	S1	V1	S2	V2	S3	V3	Vmax	Lap	Time	S1	V1	S2	V2	S3	V3	Vmax
1	6:41.168		134	48.434	119			182	10	1:18.625	25.465	202	34.461	184	18.699	246	256
2	2:08.600	45.205	157	42.127	144			215	11	1:19.487	25.752	200	34.835	179	18.900	246	255
3	1:57.697	55.973	176	41.034	89	20.690	243	127	12	1:20.955	25.774	203	36.084	171	19.097	245	252
4	1:23.300	27.460	141	36.713	164	19.127	244	251	13	1:36.906	26.103	200	35.404	173			254
5	1:19.118	25.336	198	35.100	170	18.682	246	255	14	1:30.590	34.321	199	36.953	164	19.316	244	252
6	1:18.427	25.052	202	34.692	181	18.683	245	252	15	10:35.974	26.272	201	40.740	136			204
7	1:17.657	25.070	204	34.119	180	18.468	246	252	16	1:59.111	47.170	132	47.788	117	24.153	213	194
8	1:19.026	25.962	202	34.392	180	18.672	247	253	17	1:40.643	33.179	164	44.539	129	22.925	229	206
9	1:18.536	25.391	203	34.462	182	18.683	245	254									

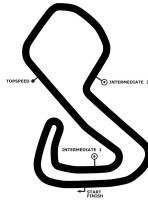
51 Nico Müller , Castrol EDGE Audi RS 5 DTM / CHE									theoretical besttime: 1:17.038								
Lap	Time	S1	V1	S2	V2	S3	V3	Vmax	Lap	Time	S1	V1	S2	V2	S3	V3	Vmax
1	2:27.163		164	43.319	115			172	13	1:19.412	25.813	202	34.747	190	18.852	245	255
2	2:05.658	42.534	99	42.331	156			178	14	5:04.545	26.088	201	35.014	177			254
3	1:59.619	59.920	194	39.963	166	19.736	245	111	15	1:43.638	40.841	167	42.091	158	20.706	238	188
4	1:20.700	26.291	199	35.441	178	18.968	245	254	16	6:59.412	27.810	198	41.678	121			244
5	1:18.782	25.534	204	34.659	185	18.589	246	254	17	1:52.603	43.087	152	45.276	131	24.240	218	211
6	1:17.406	25.096	204	33.968	194	18.342	249	254	18	1:39.547	33.487	165	42.913	139	23.147	229	230
7	1:19.199	24.940	204	34.083	160	20.176	247	255	19	1:36.453	31.789	179	41.925	145	22.739	229	242
8	1:17.194	24.932	203	33.818	196	18.444	247	254	20	1:36.224	32.420	179	41.232	147	22.572	232	242
9	1:17.190	25.053	202	33.764	191	18.373	246	253	21	1:33.426	31.346	184	40.107	153	21.973	232	244
10	1:17.826	25.168	201	34.067	194	18.591	246	252	22	2:07.903	31.262	187	40.266	118			248
11	1:18.261	25.351	202	34.218	191	18.692	247	254	23	2:11.699	47.670	182	40.199	142	43.830	79	246
12	1:18.817	25.582	202	34.351	188	18.884	243	254	24	2:33.685	44.718	156	42.373	136	1:06.594	7	201

DTM Brands Hatch

Brands Hatch GP Circuit, length 3916 m

10. & 11.08.2019

DTM



-Reg.No.: 111506

Lap Analysis free practice, 10.08.2019

53 Jamie Green , Hoffmann Group Audi RS 5 DTM / GBR									theoretical besttime: 1:17.694								
Lap	Time	S1	V1	S2	V2	S3	V3	Vmax	Lap	Time	S1	V1	S2	V2	S3	V3	Vmax
1	3:02.276		117	56.049	100			162	14	1:20.827	25.803	200	35.194	156	19.830	245	255
2	1:40.425	39.673	186	39.821	155	20.931	244	230	15	1:21.556	25.918	201	36.200	177	19.438	244	254
3	1:21.839	26.680	202	35.754	177	19.405	246	256	16	1:22.027	26.479	200	36.295	179	19.253	248	253
4	1:19.550	25.478	203	35.190	184	18.882	244	257	17	1:22.274	26.279	201	35.826	178	20.169	244	254
5	1:21.417	26.834	169	35.394	191	19.189	247	255	18	1:21.217	26.142	203	35.648	187	19.427	242	262
6	1:18.997	25.306	204	34.855	189	18.836	247	255	19	8:10.746	26.454	204	38.621	148			254
7	1:18.167	25.209	204	34.286	195	18.672	247	257	20	1:56.297	46.257	151	45.145	139	24.895	223	203
8	1:17.840	24.907	204	34.210	188	18.723	247	257	21	1:41.260	33.090	177	42.349	141	25.821	231	240
9	1:18.872	25.610	204	34.559	194	18.703	245	255	22	1:35.100	31.347	184	41.077	151	22.676	230	244
10	1:18.032	25.096	204	34.359	190	18.577	246	255	23	1:50.987	30.981	188	57.817	156	22.189	231	244
11	1:18.479	25.125	204	34.567	193	18.787	244	255	24	1:36.273	30.762	187	39.935	158	25.576	93	246
12	1:19.049	25.535	204	34.818	192	18.696	247	255	25	2:15.749	44.896	187	40.851	145			241
13	1:21.355	26.444	200	35.587	179	19.324	243	254	26	2:21.995	51.974	130	42.734	135	47.287	6	229

62 Ferdinand von Habsburg , Aston Martin Vantage DTM / AUT									theoretical besttime: 1:18.879								
Lap	Time	S1	V1	S2	V2	S3	V3	Vmax	Lap	Time	S1	V1	S2	V2	S3	V3	Vmax
1	2:33.320		129	49.756	111	25.545	210	167	11	1:20.055	26.288	199	34.777	180	18.990	247	260
2	4:42.314	33.059	151	43.339	122			199	12	1:22.585	27.641	168	35.683	175	19.261	249	258
3	2:05.172	43.060	159	41.224	144			206	13	1:21.630	26.158	199	36.208	176	19.264	242	250
4	1:55.196	56.258	184	38.516	135	20.422	243	230	14	1:20.477	25.599	201	35.636	176	19.242	242	251
5	1:24.073	27.019	194	36.971	153	20.083	243	249	15	1:19.966	25.655	200	35.215	180	19.096	242	248
6	1:22.199	26.768	201	35.881	162	19.550	242	253	16	10:05.145	26.045	200	39.270	136			231
7	1:20.154	25.872	202	35.120	160	19.162	243	251	17	1:57.589	44.536	144	48.335	117	24.718	217	172
8	1:19.359	25.412	201	34.998	169	18.949	242	251	18	1:42.009	34.057	169	44.492	134	23.460	228	215
9	1:18.975	25.211	202	34.873	172	18.891	247	250	19	1:37.321	31.998	167	42.497	148	22.826	225	233
10	1:19.488	25.290	199	35.226	174	18.972	244	250									

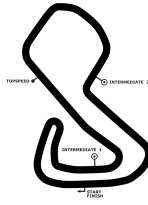
76 Jake Dennis , Aston Martin Vantage DTM / GBR									theoretical besttime: 1:17.599								
Lap	Time	S1	V1	S2	V2	S3	V3	Vmax	Lap	Time	S1	V1	S2	V2	S3	V3	Vmax
1	3:07.495		145	46.249	120	23.853	213	192	14	1:20.988	25.988	201	35.762	182	19.238	243	239
2	2:12.346	31.355	171	41.995	137			211	15	1:20.873	26.490	199	35.475	176	18.908	243	253
3	2:04.762	41.116	166	42.377	143			173	16	1:20.322	26.058	201	35.372	175	18.892	244	252
4	1:50.351	50.752	177	39.233	150	20.366	238	242	17	1:20.929	25.703	201	35.725	175	19.501	242	252
5	1:22.875	27.005	195	36.621	164	19.249	247	235	18	8:47.293	26.395	199	40.746	140			199
6	1:19.150	25.474	201	35.003	173	18.673	247	252	19	2:00.374	46.499	144	48.682	133	25.193	147	174
7	1:18.420	25.309	199	34.534	178	18.577	247	252	20	1:45.775	35.936	170	44.996	133	24.843	225	220
8	1:17.599	24.966	202	34.170	186	18.463	246	252	21	1:40.169	34.142	168	42.454	136	23.573	224	231
9	1:18.223	25.087	201	34.482	178	18.654	246	252	22	1:34.468	31.085	182	40.825	138	22.558	231	240
10	1:18.466	25.395	203	34.438	181	18.633	246	252	23	2:03.012	32.946	171	46.456	110	43.610	79	222
11	1:18.804	25.427	200	34.616	177	18.761	244	253	24	2:09.829	44.514	175	41.950	124	43.365	79	231
12	1:18.767	25.429	201	34.580	178	18.758	246	253	25	2:55.679	35.125	164	42.271	140	1:38.283	76	226
13	1:21.457	25.932	195	36.227	172	19.298	244	252									

DTM Brands Hatch

Brands Hatch GP Circuit, length 3916 m

10. & 11.08.2019

DTM



Lap Analysis free practice, 10.08.2019

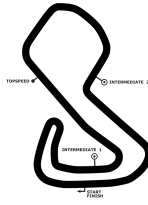
-Reg.No.: 111506

99 Mike Rockenfeller , Akrapovic Audi RS 5 DTM / DEU

theoretical besttime: 1:17.024

Lap	Time	S1	V1	S2	V2	S3	V3	Vmax	Lap	Time	S1	V1	S2	V2	S3	V3	Vmax
1	2:26.418		137	45.280	115			174	13	1:19.618	25.999	201	34.846	169	18.773	245	256
2	1:44.767	42.193	151	41.581	120	20.993	241	211	14	1:18.970	25.618	203	34.760	176	18.592	246	254
3	1:26.203	28.644	181	37.743	140	19.816	247	238	15	1:19.737	25.487	202	35.117	172	19.133	246	255
4	1:20.644	26.118	201	35.451	157	19.075	246	256	16	7:32.991	26.211	203	43.480	115			206
5	1:18.682	25.404	201	34.459	172	18.819	249	257	17	1:56.379	45.812	148	46.079	118	24.488	221	210
6	1:17.320	24.807	207	33.969	176	18.544	249	257	18	1:39.443	33.109	173	43.102	124	23.232	229	220
7	1:17.196	24.979	204	33.794	179	18.423	250	257	19	1:36.386	32.069	179	41.799	133	22.518	232	239
8	6:18.902	25.815	181	39.855	141			255	20	1:33.728	31.064	179	40.629	140	22.035	234	244
9	1:28.064	33.920	190	35.207	162	18.937	247	254	21	1:31.800	30.397	188	39.728	148	21.675	235	246
10	1:18.335	25.362	202	34.252	176	18.721	246	254	22	2:03.822	31.124	165	45.646	72	47.052	79	227
11	1:19.224	25.345	201	35.068	164	18.811	247	254	23	2:07.456	44.690	134	43.647	119	39.119	131	210
12	1:20.003	25.515	202	35.446	165	19.042	247	254	24	2:52.093	36.301	130	49.800	102	1:25.992	81	144

DTM Brands Hatch
Brands Hatch GP Circuit, length 3916 m
10. & 11.08.2019
DTM



-Reg.No.: 111506

Best Sector Times free practice

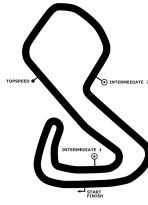
Pos.	sector 1			sector 2			sector 3			theoretical and best lap time				
	No	Driver	Time	No	Driver	Time	No	Driver	Time	No	Driver	theoretical	Best	Pos
1	4	Frijns R.	24.583	4	Frijns R.	33.395	28	Duval L.	18.117	4	Frijns R.	1:16.273	1:16.318	1
2	23	Juncadella D.	24.796	28	Duval L.	33.432	11	Wittmann M.	18.135	28	Duval L.	1:16.366	1:16.450	2
3	99	Rockenfeller M.	24.807	11	Wittmann M.	33.487	4	Frijns R.	18.295	11	Wittmann M.	1:16.431	1:16.553	3
4	7	Spengler B.	24.809	51	Müller N.	33.764	51	Müller N.	18.342	99	Rockenfeller M.	1:17.024	1:17.196	6
5	11	Wittmann M.	24.809	16	Glock T.	33.775	16	Glock T.	18.343	51	Müller N.	1:17.038	1:17.190	5
6	28	Duval L.	24.817	31	Van der Linde S.	33.790	27	Aberdein J.	18.350	16	Glock T.	1:17.085	1:17.085	4
7	21	Fittipaldi P.	24.865	99	Rockenfeller M.	33.794	25	Eng P.	18.359	27	Aberdein J.	1:17.190	1:17.295	7
8	3	Di Resta P.	24.870	23	Juncadella D.	33.957	7	Spengler B.	18.400	23	Juncadella D.	1:17.206	1:17.372	9
9	27	Aberdein J.	24.874	27	Aberdein J.	33.966	99	Rockenfeller M.	18.423	31	Van der Linde S.	1:17.242	1:17.303	8
10	53	Green J.	24.907	25	Eng P.	34.008	23	Juncadella D.	18.453	7	Spengler B.	1:17.269	1:17.456	10
11	31	Van der Linde S.	24.928	7	Spengler B.	34.060	76	Dennis J.	18.463	25	Eng P.	1:17.312	1:17.637	14
12	51	Müller N.	24.932	33	Rast R.	34.062	33	Rast R.	18.465	3	Di Resta P.	1:17.445	1:17.553	11
13	25	Eng P.	24.945	3	Di Resta P.	34.063	47	Eriksson J.	18.468	33	Rast R.	1:17.480	1:17.604	13
14	33	Rast R.	24.953	47	Eriksson J.	34.119	21	Fittipaldi P.	18.502	21	Fittipaldi P.	1:17.574	1:17.734	16
15	76	Dennis J.	24.966	76	Dennis J.	34.170	3	Di Resta P.	18.512	76	Dennis J.	1:17.599	1:17.599	12
16	16	Glock T.	24.967	21	Fittipaldi P.	34.207	31	Van der Linde S.	18.524	47	Eriksson J.	1:17.639	1:17.657	15
17	47	Eriksson J.	25.052	53	Green J.	34.210	53	Green J.	18.577	53	Green J.	1:17.694	1:17.840	17
18	62	von Habsburg F.	25.211	62	von Habsburg F.	34.777	62	von Habsburg F.	18.891	62	von Habsburg F.	1:18.879	1:18.975	18

DTM Brands Hatch

Brands Hatch GP Circuit, length 3916 m

10. & 11.08.2019

DTM



DTM

Topspeed free practice, 10.08.2019

-Reg.No.: 111506

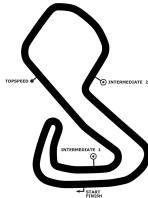
Car No.	Driver	Make	Speed km/h
33	René Rast	Audi Sport RS 5 DTM	263
31	Sheldon Van der Linde	Shell BMW M4 DTM	262
53	Jamie Green	Hoffmann Group Audi RS 5 DTM	262
27	Jonathan Aberdein	WRT Audi RS 5 DTM	262
21	Pietro Fittipaldi	WRT Audi RS 5 DTM	261
7	Bruno Spengler	BMW Bank M4 DTM	260
62	Ferdinand von Habsburg	Aston Martin Vantage DTM	260
23	Daniel Juncadella	Aston Martin Vantage DTM	259
28	Loic Duval	MASCOT WORKWEAR Audi RS 5 DTM	258
4	Robin Frijns	Aral Ultimate Audi RS 5 DTM	258
3	Paul Di Resta	Aston Martin Vantage DTM	258
99	Mike Rockenfeller	Akrapovic Audi RS 5 DTM	257
25	Philipp Eng	ZF BMW M4 DTM	256
47	Joel Eriksson	CATL BMW M4 DTM	256
51	Nico Müller	Castrol EDGE Audi RS 5 DTM	255
16	Timo Glock	JIVS BMW M4 DTM	255
11	Marco Wittmann	Schaeffler BMW M4 DTM	255
76	Jake Dennis	Aston Martin Vantage DTM	253

DTM Brands Hatch

Brands Hatch GP Circuit, length 3916 m

10. & 11.08.2019

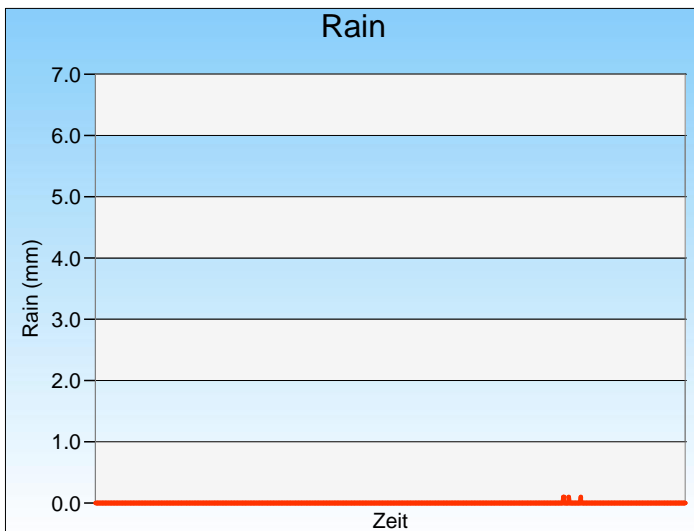
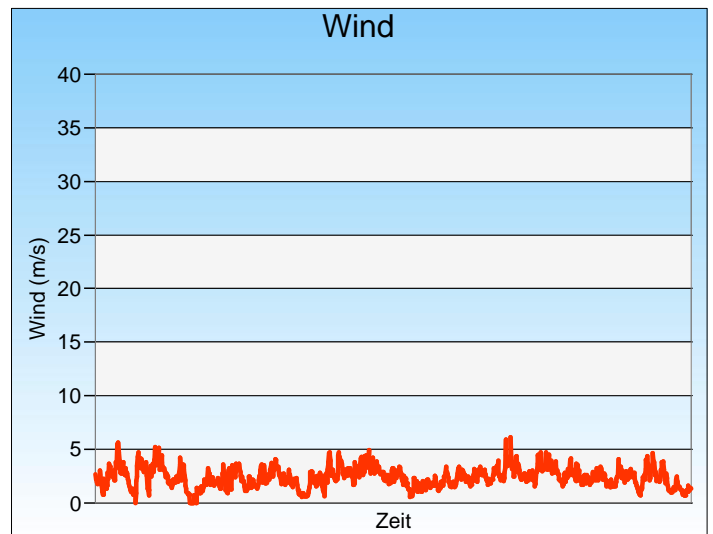
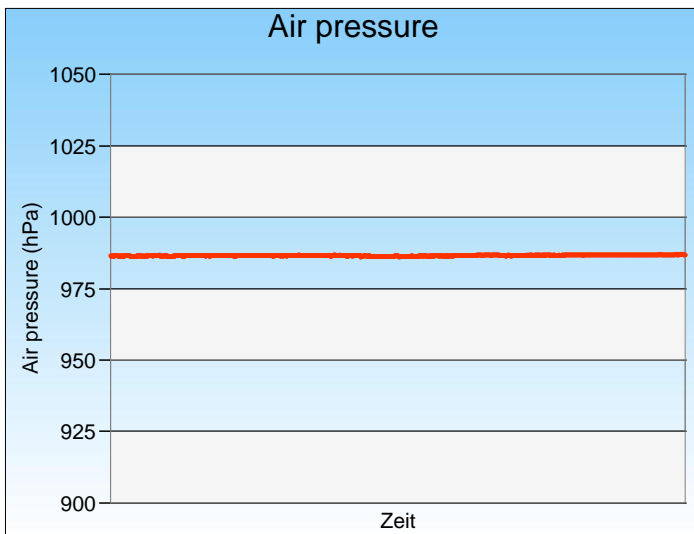
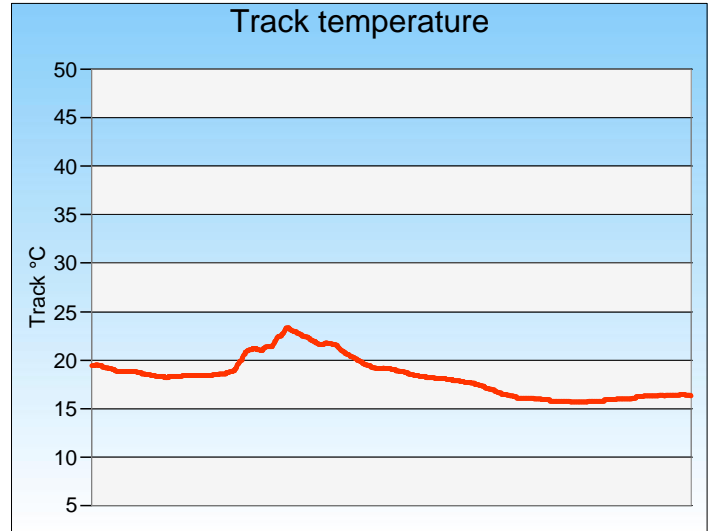
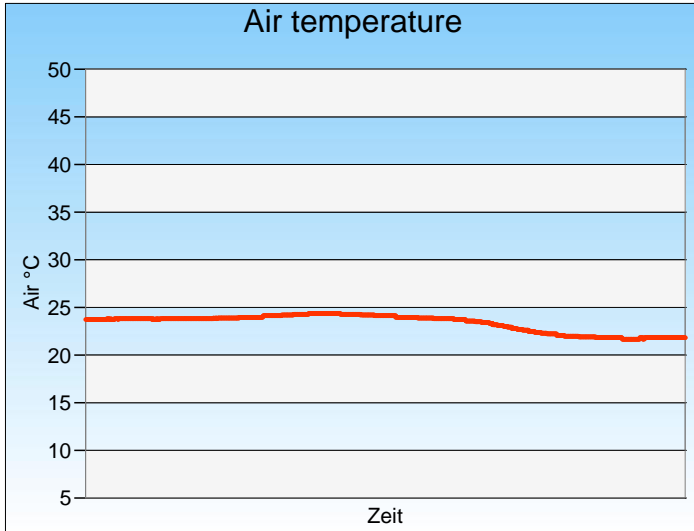
DTM



-Reg.No.: 111506

Weather free practice

10.08.2019, 09:00:00 - 9:45:00



Weather:

