

Silverstone Circuit

On June, 6 - 7

RACE - 1 CLASSIFICATION

Clas.	Nº	Entrant	Nat.	Driver	Nat.	Vehicle	Laps	Total Time	Km/h.	Gap	Best	Time	Km/h.
1	34	STIAN PAULSEN RACING	NOR	Stian Paulsen	NOR	SEAT Leon Cup Racer MK3	11	24'43.965	157.203		2	2'13.395	158.984
2	1	BAPORO MOTORSPORT	ESP	Pol Rosell	ESP	SEAT Leon Cup Racer MK3	11	24'44.541	157.142	0"576	2	2'13.584	158.759
3	6	PCR SPORT	ESP	Mikel Azcona	ESP	SEAT Leon Cup Racer MK3	11	24'48.771	156.696	4"806	2	2'13.066	159.377
4	22	BAPORO MOTORSPORT	GBR	Alexander Morgan	GBR	SEAT Leon Cup Racer MK3	11	24'53.941	156.154	9"976	2	2'14.379	157.820
5	2	BAPORO MOTORSPORT	PRT	Manuel Gíao	PRT	SEAT Leon Cup Racer MK3	11	24'54.394	156.106	10"429	2	2'13.980	158.290
6	33	TARGET, SRL	ESP	Jordi Oriola	ESP	SEAT Leon Cup Racer MK3	11	24'54.859	156.058	10"894	2	2'13.774	158.534
7	3	JULIEN BRICHÉ	FRA	Julien Briché	FRA	SEAT Leon Cup Racer MK3	11	24'56.597	155.877	12"632	2	2'13.808	158.493
8	8	WOLF-POWER RACING	GBR	Jonathan Cocker	GBR	SEAT Leon Cup Racer MK3	11	24'59.036	155.623	15"071	3	2'14.485	157.695
9	20	LOURENÇO BEIRÃO	PRT	Lourenço Beirão Da Veiga	PRT	SEAT Leon Cup Racer MK3	11	25'01.601	155.357	17"636	2	2'14.442	157.746
10	28	MONLAU COMPETICIÓN	ESP	Fran Rueda	ESP	SEAT Leon Cup Racer MK3	11	25'02.262	155.289	18"297	3	2'14.393	157.803
11	9	LUCILE CYPRIANO	FRA	Lucile Cypriano	FRA	SEAT Leon Cup Racer MK3	11	25'04.381	155.070	20"416	4	2'15.131	156.942
12	61	SEAT AUSTRIA	AUT	Mario Dablander	AUT	SEAT Leon Cup Racer MK3	11	25'05.372	154.968	21"407	3	2'14.927	157.179
13	11	TARGET, SRL	AUT	Jürgen Schmarl	AUT	SEAT Leon Cup Racer MK3	11	25'07.907	154.707	23"942	3	2'14.259	157.961
14	5	THIBAUT MOURGUES	FRA	Thibaut Mourgues	FRA	SEAT Leon Cup Racer MK3	11	25'08.736	154.622	24"771	4	2'14.876	157.238
15	87	B3 HUNGARY KFT	HUN	Edina Bús	HUN	SEAT Leon Cup Racer MK3	11	25'09.659	154.528	25"694	3	2'14.321	157.888
16	46	ZENGŐ MOTORSPORT KFT	HUN	Zsolt Dávid Szabó	HUN	SEAT Leon Cup Racer MK3	11	25'09.837	154.510	25"872	3	2'15.086	156.994
17	24	TARGET, SRL	CHE	Andrina Gugger	CHE	SEAT Leon Cup Racer MK3	11	25'10.624	154.429	26"659	3	2'15.195	156.867
18	12	LEIN RACING	MNE	Dejan Bulatovic	MNE	SEAT Leon Cup Racer MK3	11	25'12.636	154.224	28"671	2	2'14.985	157.111
19	23	STEFANO ZANINI	MCO	Stefano Zanini	MCO	SEAT Leon Cup Racer MK3	11	25'13.168	154.170	29"203	2	2'15.443	156.580
20	7	WOLF-POWER RACING	CHE	Michel Zemp	CHE	SEAT Leon Cup Racer MK3	11	25'14.262	154.058	30"297	3	2'15.846	156.116
21	21	MARIE BAUS-COPPENS	FRA	Marie Baus - Coppens	FRA	SEAT Leon Cup Racer MK3	11	25'26.717	152.801	42"752	2	2'16.300	155.596
22	73	MATEU CLEMENT	FRA	Mateu Clement	FRA	SEAT Leon Cup Racer MK3	11	25'36.264	151.852	52"299	2	2'16.895	154.919
23	37	B3 HUNGARY KFT	HUN	Dominik Fekete	HUN	SEAT Leon Cup Racer MK3	11	25'37.568	151.723	53"603	2	2'16.283	155.615
24	88	FINLAY CROCKER	GBR	Finlay Crocker	GBR	SEAT Leon Cup Racer MK3	11	25'39.247	151.557	55"282	4	2'17.030	154.767
25	17	LEIN RACING	SRB	Mladen Lalusic	SRB	SEAT Leon Cup Racer MK3	11	25'56.398	149.887	1'12"433	2	2'17.053	154.741
26	77	NAVARRO JEAN-LAURENT	FRA	Navarro Jean-Laurent	FRA	SEAT Leon Cup Racer MK3	11	26'46.765	145.189	2'02"800	7	2'17.610	154.114
		NOT CLASSIFIED											
27	67	MARCO PELLEGRINI	ITA	Marco Pellegrini	ITA	SEAT Leon Cup Racer MK3	6	14'26.781	146.803	5 Lap.	4	2'16.431	155.446
28	10	TARGET, SRL	CRI	Mauricio Hernandez	CRI	SEAT Leon Cup Racer MK3	3	07'11.602	147.411	8 Lap.	2	2'16.466	155.406

Fastest lap Mikel Azcona 2'13.066 159.377 Km/h.

Silverstone Circuit on June 06, 2015

At 12:42

RACE DIRECTOR

TIMEKEEPER

LAP ANALYSIS RACE - 1

On June, 6 - 7
Silverstone Circuit

Number	1			2			3			5			6			7		
Lap	Lap Time	Partial	Speed	Lap Time	Partial	Speed	Lap Time	Partial	Speed	Lap Time	Partial	Speed	Lap Time	Partial	Speed	Lap Time	Partial	Speed
1 ^a - 1	0'44.337	0'44.337	215.569	0'45.427	0'45.427	216.868	0'44.584	0'44.584	216.001	0'46.407	0'46.407	218.624	0'44.484	0'44.484	214.286	0'51.247	0'51.247	211.765
1 ^a - 2	1'43.816	0'59.479		1'45.459	1'00.032		1'44.592	1'00.008		1'47.405	1'00.998		1'43.277	0'58.793		1'52.296	1'01.049	
1 ^a - 3	2'18.807	0'34.991		2'20.223	0'34.764		2'19.639	0'35.047		2'24.017	0'36.612		2'18.098	0'34.821		2'28.017	0'35.721	
2 ^a - 1	0'40.361	0'40.361	214.712	0'40.130	0'40.130	218.182	0'40.197	0'40.197	217.742	0'40.349	0'40.349	216.001	0'40.173	0'40.173	213.018	0'41.175	0'41.175	216.868
2 ^a - 2	1'38.438	0'58.077		1'38.878	0'58.748		1'38.795	0'58.598		1'40.950	1'00.601		1'37.999	0'57.826		1'40.826	0'59.651	
2 ^a - 3	2'13.584	0'35.146		2'13.980	0'35.102		2'13.808	0'35.013		2'16.240	0'35.290		2'13.066	0'35.067		2'16.379	0'35.553	
3 ^a - 1	0'40.461	0'40.461	212.599	0'40.209	0'40.209	219.067	0'40.430	0'40.430	213.439	0'40.297	0'40.297	214.286	0'40.336	0'40.336	210.938	0'41.244	0'41.244	215.569
3 ^a - 2	1'38.631	0'58.170		1'39.234	0'59.025		1'38.992	0'58.562		1'39.258	0'58.961		1'38.595	0'58.259		1'40.384	0'59.140	
3 ^a - 3	2'13.785	0'35.154		2'14.433	0'35.199		2'14.138	0'35.146		2'15.161	0'35.903		2'13.894	0'35.299		2'15.846	0'35.462	
4 ^a - 1	0'40.383	0'40.383	211.765	0'40.447	0'40.447	217.304	0'40.770	0'40.770	210.938	0'40.507	0'40.507	216.001	0'40.445	0'40.445	208.898	0'40.885	0'40.885	212.599
4 ^a - 2	1'38.888	0'58.505		1'39.734	0'59.287		1'39.654	0'58.884		1'39.504	0'58.997		1'39.004	0'58.559		1'40.517	0'59.632	
4 ^a - 3	2'14.110	0'35.222		2'15.055	0'35.321		2'15.046	0'35.392		2'14.876	0'35.372		2'14.153	0'35.149		2'16.045	0'35.528	
5 ^a - 1	0'40.489	0'40.489	213.018	0'40.467	0'40.467	216.433	0'41.041	0'41.041	211.765	0'40.942	0'40.942	220.409	0'40.755	0'40.755	210.527	0'41.076	0'41.076	214.712
5 ^a - 2	1'39.045	0'58.556		1'40.171	0'59.704		1'40.525	0'59.484		1'40.886	0'59.944		1'39.138	0'58.383		1'41.081	1'00.005	
5 ^a - 3	2'14.586	0'35.541		2'15.747	0'35.576		2'16.526	0'36.001		2'16.617	0'35.731		2'14.596	0'35.458		2'16.937	0'35.856	
6 ^a - 1	0'40.952	0'40.952	213.439	0'40.707	0'40.707	218.182	0'40.867	0'40.867	216.433	0'40.763	0'40.763	216.868	0'40.989	0'40.989	210.938	0'41.353	0'41.353	215.140
6 ^a - 2	1'39.845	0'58.893		1'40.190	0'59.483		1'41.112	1'00.245		1'40.826	1'00.063		1'39.900	0'58.911		1'41.707	1'00.354	
6 ^a - 3	2'15.245	0'35.400		2'15.590	0'35.400		2'16.718	0'35.606		2'16.430	0'35.604		2'15.124	0'35.224		2'17.238	0'35.531	
7 ^a - 1	0'40.603	0'40.603	213.439	0'40.799	0'40.799	216.868	0'40.786	0'40.786	215.140	0'40.751	0'40.751	216.001	0'40.969	0'40.969	210.938	0'41.298	0'41.298	213.439
7 ^a - 2	1'39.232	0'58.629		1'40.149	0'59.350		1'40.438	0'59.652		1'40.544	0'59.793		1'39.901	0'58.932		1'41.136	0'59.838	
7 ^a - 3	2'14.600	0'35.368		2'15.528	0'35.379		2'15.852	0'35.414		2'16.170	0'35.626		2'15.255	0'35.354		2'17.817	0'35.681	
8 ^a - 1	0'40.570	0'40.570	216.001	0'40.681	0'40.681	216.001	0'41.004	0'41.004	216.001	0'40.908	0'40.908	217.742	0'40.689	0'40.689	211.351	0'41.300	0'41.300	213.018
8 ^a - 2	1'39.609	0'59.039		1'40.183	0'59.502		1'40.391	0'59.387		1'40.944	1'00.036		1'40.438	0'59.749		1'40.771	0'59.471	
8 ^a - 3	2'15.117	0'35.508		2'15.878	0'35.695		2'15.904	0'35.513		2'16.997	0'36.053		2'16.125	0'35.687		2'16.408	0'35.637	
9 ^a - 1	0'40.908	0'40.908	213.018	0'40.872	0'40.872	215.569	0'41.115	0'41.115	213.018	0'41.219	0'41.219	214.712	0'41.052	0'41.052	213.018	0'41.756	0'41.756	212.599
9 ^a - 2	1'39.579	0'58.671		1'41.040	1'00.168		1'40.720	0'59.605		1'41.433	1'00.214		1'39.957	0'58.905		1'41.677	0'59.921	
9 ^a - 3	2'14.932	0'35.353		2'16.466	0'35.426		2'16.277	0'35.557		2'17.184	0'35.751		2'16.036	0'36.079		2'17.412	0'35.735	
10 ^a - 1	0'40.704	0'40.704	213.439	0'40.573	0'40.573	215.140	0'40.866	0'40.866	216.001	0'41.205	0'41.205	213.018	0'40.914	0'40.914	210.938	0'41.493	0'41.493	211.351
10 ^a - 2	1'39.335	0'58.631		1'39.872	0'59.299		1'40.360	0'59.494		1'41.573	1'00.368		1'40.016	0'59.102		1'41.223	0'59.730	
10 ^a - 3	2'14.659	0'35.324		2'15.359	0'35.487		2'16.031	0'35.671		2'17.801	0'36.228		2'15.640	0'35.624		2'16.908	0'35.685	
11 ^a - 1	0'40.578	0'40.578	213.862	0'40.772	0'40.772	216.001	0'41.243	0'41.243	213.018	0'41.347	0'41.347	213.018	0'41.352	0'41.352	208.093	0'41.140	0'41.140	212.599
11 ^a - 2	1'39.680	0'59.102		1'40.229	0'59.457		1'41.054	0'59.811		1'41.563	1'00.216		1'41.004	0'59.652		1'40.624	0'59.484	
11 ^a - 3	2'15.116	0'35.436		2'16.135	0'35.906		2'16.658	0'35.604		2'17.243	0'35.680		2'16.784	0'35.780		2'16.255	0'35.631	

Ideal Lap	
0'40.361	0'40.361
1'38.438	0'58.077
2'13.429	0'34.991

Ideal Lap	
0'40.130	0'40.130
1'38.878	0'58.748
2'13.642	0'34.764

Ideal Lap	
0'40.197	0'40.197
1'38.759	0'58.562
2'13.772	0'35.013

Ideal Lap	
0'40.297	0'40.297
1'39.258	0'58.961
2'14.548	0'35.290

Ideal Lap	
0'40.173	0'40.173
1'37.999	0'57.826
2'12.820	0'34.821

Ideal Lap	
0'40.885	0'40.885
1'40.025	0'59.140
2'15.487	0'35.462

Ideal Best Lap	
0'39.923	0'39.923
1'37.749	0'57.826
2'12.513	0'34.764



LAP ANALYSIS RACE - 1

On June, 6 - 7
Silverstone Circuit

Number	8			9			10			11			12			17		
	Lap Time	Partial	Speed	Lap Time	Partial	Speed	Lap Time	Partial	Speed	Lap Time	Partial	Speed	Lap Time	Partial	Speed	Lap Time	Partial	Speed
1 ^a - 1	0'46.029	0'46.029	216.433	0'47.465	0'47.465	216.433	0'47.627	0'47.627	218.182	0'48.150	0'48.150	222.223	0'50.365	0'50.365	212.599	0'51.869	0'51.869	215.569
1 ^a - 2	1'46.554	1'00.525		1'47.517	1'00.052		1'51.870	1'04.243		1'48.700	1'00.550		1'51.562	1'01.197		1'54.608	1'02.739	
1 ^a - 3	2'22.174	0'35.620		2'22.909	0'35.392		2'27.662	0'35.792		2'24.609	0'35.909		2'27.435	0'35.873		2'30.410	0'35.802	
2 ^a - 1	0'40.472	0'40.472	215.140	0'40.659	0'40.659	220.409	0'41.255	0'41.255	214.712	0'40.479	0'40.479	222.223	0'40.781	0'40.781	215.569	0'40.893	0'40.893	216.868
2 ^a - 2	1'40.042	0'59.570		1'39.907	0'59.248		1'40.680	0'59.425		1'40.857	1'00.378		1'39.758	0'58.977		1'41.253	1'00.360	
2 ^a - 3	2'15.297	0'35.255		2'15.317	0'35.410		2'16.466	0'35.786		2'16.084	0'35.227		2'14.985	0'35.227		2'17.053	0'35.800	
3 ^a - 1	0'40.296	0'40.296	213.862	0'40.587	0'40.587	217.304	0'41.329	0'41.329	210.117	0'40.221	0'40.221	219.513	0'40.969	0'40.969	214.286	0'41.140	0'41.140	213.439
3 ^a - 2	1'39.288	0'58.992		1'39.875	0'59.288		1'45.987	1'04.658	PIT	1'39.144	0'58.923		1'40.646	0'59.677		1'41.136	0'59.996	
3 ^a - 3	2'14.485	0'35.197		2'15.641	0'35.766		2'27.474	0'41.487		2'14.259	0'35.115		2'16.127	0'35.481		2'17.252	0'36.116	
4 ^a - 1	0'40.503	0'40.503	214.712	0'40.563	0'40.563	218.182				0'40.380	0'40.380	218.182	0'41.019	0'41.019	209.709	0'42.487	0'42.487	212.181
4 ^a - 2	1'39.696	0'59.193		1'39.616	0'59.053					1'39.382	0'59.002		1'40.376	0'59.357		1'42.523	1'00.036	
4 ^a - 3	2'15.044	0'35.348		2'15.131	0'35.515					2'14.726	0'35.344		2'15.946	0'35.570		2'18.310	0'35.787	
5 ^a - 1	0'40.932	0'40.932	215.140	0'41.875	0'41.875	219.960				0'41.308	0'41.308	219.960	0'41.288	0'41.288	210.938	0'47.310	0'47.310	206.501
5 ^a - 2	1'40.329	0'59.397		1'41.267	0'59.392					1'42.582	1'01.274		1'40.498	0'59.210		1'48.212	1'00.902	
5 ^a - 3	2'15.887	0'35.558		2'17.047	0'35.780					2'18.355	0'35.773		2'16.619	0'36.121		2'24.222	0'36.010	
6 ^a - 1	0'41.348	0'41.348	217.742	0'41.460	0'41.460	218.182				0'40.742	0'40.742	222.223	0'41.567	0'41.567	210.527	0'42.627	0'42.627	207.294
6 ^a - 2	1'41.967	1'00.619		1'40.757	0'59.297					1'40.057	0'59.315		1'41.243	0'59.676		1'44.107	1'01.480	
6 ^a - 3	2'17.482	0'35.515		2'16.298	0'35.541					2'15.620	0'35.563		2'17.159	0'35.916		2'20.583	0'36.476	
7 ^a - 1	0'41.315	0'41.315	210.117	0'40.970	0'40.970	217.742				0'40.829	0'40.829	220.409	0'41.719	0'41.719	212.181	0'42.510	0'42.510	209.709
7 ^a - 2	1'40.455	0'59.140		1'40.706	0'59.736					1'40.599	0'59.770		1'41.336	0'59.617		1'43.728	1'01.218	
7 ^a - 3	2'15.901	0'35.446		2'16.333	0'35.627					2'16.071	0'35.472		2'16.926	0'35.590		2'20.264	0'36.536	
8 ^a - 1	0'41.102	0'41.102	211.351	0'41.138	0'41.138	219.067				0'40.936	0'40.936	222.681	0'41.172	0'41.172	211.765	0'42.354	0'42.354	211.351
8 ^a - 2	1'39.992	0'58.890		1'40.513	0'59.375					1'41.037	1'00.101		1'40.818	0'59.646		1'43.386	1'01.032	
8 ^a - 3	2'15.611	0'35.619		2'16.266	0'35.753					2'16.948	0'35.911		2'16.601	0'35.783		2'20.261	0'36.875	
9 ^a - 1	0'40.988	0'40.988	211.351	0'40.948	0'40.948	214.712				0'41.168	0'41.168	219.960	0'41.536	0'41.536	210.527	0'42.761	0'42.761	209.709
9 ^a - 2	1'39.995	0'59.007		1'40.413	0'59.465					1'41.571	1'00.403		1'41.280	0'59.744		1'44.814	1'02.053	
9 ^a - 3	2'15.581	0'35.586		2'16.074	0'35.661					2'17.295	0'35.724		2'16.925	0'35.645		2'21.836	0'37.022	
10 ^a - 1	0'41.089	0'41.089	212.181	0'41.181	0'41.181	214.286				0'41.109	0'41.109	220.409	0'41.157	0'41.157	211.351	0'42.791	0'42.791	208.898
10 ^a - 2	1'40.224	0'59.135		1'40.846	0'59.665					1'41.513	1'00.404		1'40.914	0'59.757		1'45.149	1'02.358	
10 ^a - 3	2'15.817	0'35.593		2'16.609	0'35.763					2'17.174	0'35.661		2'16.520	0'35.606		2'21.955	0'36.806	
11 ^a - 1	0'41.000	0'41.000	211.351	0'41.255	0'41.255	213.018				0'41.439	0'41.439	216.868	0'41.533	0'41.533	209.303	0'43.596	0'43.596	206.897
11 ^a - 2	1'40.148	0'59.148		1'40.852	0'59.597					1'41.285	0'59.846		1'41.698	1'00.165		1'47.029	1'03.433	
11 ^a - 3	2'15.757	0'35.609		2'16.756	0'35.904					2'16.766	0'35.481		2'17.393	0'35.695		2'24.252	0'37.223	

Ideal Lap	
0'40.296	0'40.296
1'39.186	0'58.890
2'14.383	0'35.197

Ideal Lap	
0'40.563	0'40.563
1'39.616	0'59.053
2'15.008	0'35.392

Ideal Lap	
0'41.255	0'41.255
1'40.680	0'59.425
2'16.466	0'35.786

Ideal Lap	
0'40.221	0'40.221
1'39.144	0'58.923
2'14.259	0'35.115

Ideal Lap	
0'40.781	0'40.781
1'39.758	0'58.977
2'14.985	0'35.227

Ideal Lap	
0'40.893	0'40.893
1'40.889	0'59.996
2'16.676	0'35.787

Ideal Best Lap	
0'39.923	0'39.923
1'37.749	0'57.826
2'12.513	0'34.764



LAP ANALYSIS RACE - 1

On June, 6 - 7
Silverstone Circuit

Number	20			21			22			23			24			28		
Lap	Lap Time	Partial	Speed	Lap Time	Partial	Speed	Lap Time	Partial	Speed	Lap Time	Partial	Speed	Lap Time	Partial	Speed	Lap Time	Partial	Speed
1 ^a - 1	0'46.809	0'46.809	218.182	0'51.989	0'51.989	217.742	0'44.866	0'44.866	217.742	0'49.789	0'49.789	215.140	0'48.931	0'48.931	215.140	0'48.562	0'48.562	219.067
1 ^a - 2	1'46.802	0'59.993		1'52.565	1'00.576		1'44.369	0'59.503		1'51.148	1'01.359		1'50.840	1'01.909		1'49.019	1'00.457	
1 ^a - 3	2'22.346	0'35.544		2'28.263	0'35.698		2'19.324	0'34.955		2'26.798	0'35.650		2'26.428	0'35.588		2'24.416	0'35.397	
2 ^a - 1	0'40.426	0'40.426	218.182	0'41.275	0'41.275	216.868	0'40.213	0'40.213	217.304	0'40.798	0'40.798	214.712	0'40.462	0'40.462	217.304	0'40.350	0'40.350	217.742
2 ^a - 2	1'39.263	0'58.837		1'40.881	0'59.606		1'38.899	0'58.686		1'40.029	0'59.231		1'39.936	0'59.474		1'39.513	0'59.163	
2 ^a - 3	2'14.442	0'35.179		2'16.300	0'35.419		2'14.379	0'35.480		2'15.443	0'35.414		2'15.492	0'35.556		2'14.748	0'35.235	
3 ^a - 1	0'40.458	0'40.458	210.938	0'41.398	0'41.398	213.439	0'40.460	0'40.460	215.569	0'41.034	0'41.034	213.862	0'40.522	0'40.522	215.140	0'40.360	0'40.360	214.286
3 ^a - 2	1'39.272	0'58.814		1'41.951	1'00.553		1'39.308	0'58.848		1'41.483	1'00.449		1'39.627	0'59.105		1'39.308	0'58.948	
3 ^a - 3	2'14.446	0'35.174		2'17.715	0'35.764		2'14.509	0'35.201		2'17.013	0'35.530		2'15.195	0'35.568		2'14.393	0'35.085	
4 ^a - 1	0'40.919	0'40.919	211.765	0'41.644	0'41.644	208.495	0'40.512	0'40.512	215.140	0'41.328	0'41.328	211.765	0'40.669	0'40.669	215.140	0'40.613	0'40.613	214.712
4 ^a - 2	1'39.929	0'59.010		1'40.922	0'59.278		1'39.666	0'59.154		1'40.687	0'59.359		1'40.152	0'59.483		1'39.494	0'58.881	
4 ^a - 3	2'15.374	0'35.445		2'16.742	0'35.820		2'14.944	0'35.278		2'16.438	0'35.751		2'15.784	0'35.632		2'15.034	0'35.540	
5 ^a - 1	0'41.050	0'41.050	212.599	0'42.004	0'42.004	209.303	0'40.647	0'40.647	214.712	0'41.383	0'41.383	211.765	0'41.097	0'41.097	213.439	0'41.890	0'41.890	213.862
5 ^a - 2	1'40.292	0'59.242		1'41.609	0'59.605		1'40.275	0'59.628		1'41.121	0'59.738		1'40.457	0'59.360		1'40.722	0'58.832	
5 ^a - 3	2'15.964	0'35.672		2'18.622	0'37.053		2'15.611	0'35.336		2'17.062	0'35.941		2'16.093	0'35.636		2'17.045	0'36.323	
6 ^a - 1	0'41.534	0'41.534	213.018	0'42.719	0'42.719	211.351	0'40.876	0'40.876	212.181	0'41.625	0'41.625	211.765	0'40.994	0'40.994	216.433	0'41.209	0'41.209	211.351
6 ^a - 2	1'42.557	1'01.023		1'43.094	1'00.375		1'40.436	0'59.560		1'41.480	0'59.855		1'40.796	0'59.802		1'40.501	0'59.292	
6 ^a - 3	2'18.164	0'35.607		2'18.844	0'35.750		2'15.883	0'35.447		2'17.063	0'35.583		2'16.375	0'35.579		2'16.283	0'35.782	
7 ^a - 1	0'41.287	0'41.287	216.001	0'42.007	0'42.007	210.527	0'40.965	0'40.965	213.439	0'41.501	0'41.501	213.862	0'41.143	0'41.143	213.862	0'41.197	0'41.197	212.599
7 ^a - 2	1'40.610	0'59.323		1'42.018	1'00.011		1'40.127	0'59.162		1'40.838	0'59.337		1'41.888	1'00.745		1'40.413	0'59.216	
7 ^a - 3	2'16.004	0'35.394		2'18.156	0'36.138		2'15.465	0'35.338		2'16.458	0'35.620		2'17.513	0'35.625		2'16.064	0'35.651	
8 ^a - 1	0'40.967	0'40.967	216.433	0'41.757	0'41.757	211.351	0'40.867	0'40.867	212.599	0'41.322	0'41.322	213.862	0'41.081	0'41.081	216.433	0'41.015	0'41.015	213.862
8 ^a - 2	1'40.424	0'59.457		1'41.912	1'00.155		1'40.321	0'59.454		1'40.569	0'59.247		1'40.885	0'59.804		1'40.344	0'59.329	
8 ^a - 3	2'15.963	0'35.539		2'17.604	0'35.692		2'15.730	0'35.409		2'16.071	0'35.502		2'16.588	0'35.703		2'16.101	0'35.757	
9 ^a - 1	0'41.358	0'41.358	213.018	0'41.836	0'41.836	210.938	0'40.825	0'40.825	213.018	0'41.342	0'41.342	215.140	0'41.137	0'41.137	214.286	0'41.119	0'41.119	212.599
9 ^a - 2	1'40.694	0'59.336		1'41.719	0'59.883		1'40.334	0'59.509		1'41.267	0'59.925		1'40.749	0'59.612		1'40.385	0'59.266	
9 ^a - 3	2'16.198	0'35.504		2'17.553	0'35.834		2'15.860	0'35.526		2'16.829	0'35.562		2'16.578	0'35.829		2'16.075	0'35.690	
10 ^a - 1	0'41.212	0'41.212	212.599	0'42.623	0'42.623	210.117	0'40.980	0'40.980	213.018	0'41.716	0'41.716	212.599	0'41.176	0'41.176	215.569	0'41.072	0'41.072	213.018
10 ^a - 2	1'40.650	0'59.438		1'43.134	1'00.511		1'40.586	0'59.606		1'41.268	0'59.552		1'41.961	1'00.785		1'40.247	0'59.175	
10 ^a - 3	2'16.161	0'35.511		2'18.798	0'35.664		2'16.153	0'35.567		2'16.867	0'35.599		2'17.736	0'35.775		2'15.903	0'35.656	
11 ^a - 1	0'41.331	0'41.331	212.599	0'41.682	0'41.682	210.527	0'40.897	0'40.897	211.351	0'41.520	0'41.520	212.599	0'41.087	0'41.087	216.868	0'41.079	0'41.079	212.599
11 ^a - 2	1'40.832	0'59.501		1'41.969	1'00.287		1'40.376	0'59.479		1'41.471	0'59.951		1'41.061	0'59.974		1'40.412	0'59.333	
11 ^a - 3	2'16.539	0'35.707		2'18.080	0'36.111		2'16.083	0'35.707		2'17.126	0'35.655		2'16.842	0'35.781		2'16.200	0'35.788	

Ideal Lap	
0'40.426	0'40.426
1'39.240	0'58.814
2'14.414	0'35.174

Ideal Lap	
0'41.275	0'41.275
1'40.553	0'59.278
2'15.972	0'35.419

Ideal Lap	
0'40.213	0'40.213
1'38.899	0'58.686
2'13.854	0'34.955

Ideal Lap	
0'40.798	0'40.798
1'40.029	0'59.231
2'15.443	0'35.414

Ideal Lap	
0'40.462	0'40.462
1'39.567	0'59.105
2'15.123	0'35.556

Ideal Lap	
0'40.350	0'40.350
1'39.182	0'58.832
2'14.267	0'35.085

Ideal Best Lap	
0'39.923	0'39.923
1'37.749	0'57.826
2'12.513	0'34.764



LAP ANALYSIS RACE - 1

On June, 6 - 7
Silverstone Circuit

Number	33			34			37			46			61			67		
Lap	Lap Time	Partial	Speed	Lap Time	Partial	Speed	Lap Time	Partial	Speed	Lap Time	Partial	Speed	Lap Time	Partial	Speed	Lap Time	Partial	Speed
1 ^a - 1	0'45.603	0'45.603	217.742	0'44.157	0'44.157	207.294	0'51.548	0'51.548	214.286	0'47.889	0'47.889	217.304	0'46.186	0'46.186	216.868	0'52.536	0'52.536	218.182
1 ^a - 2	1'45.702	1'00.099		1'42.248	0'58.091		2'00.924	1'09.376		1'49.917	1'02.028		1'46.276	1'00.090		1'54.281	1'01.745	
1 ^a - 3	2'20.880	0'35.178		2'17.252	0'35.004		2'36.653	0'35.729		2'25.386	0'35.469		2'22.680	0'36.404		2'29.803	0'35.522	
2 ^a - 1	0'40.181	0'40.181	216.433	0'40.314	0'40.314	210.938	0'41.342	0'41.342	210.117	0'40.321	0'40.321	216.001	0'40.645	0'40.645	216.868	0'41.045	0'41.045	219.067
2 ^a - 2	1'38.631	0'58.450		1'38.268	0'57.954		1'40.743	0'59.401		1'40.473	1'00.152		1'39.876	0'59.231		1'40.659	0'59.614	
2 ^a - 3	2'13.774	0'35.143		2'13.395	0'35.127		2'16.283	0'35.540		2'15.796	0'35.323		2'15.254	0'35.378		2'16.600	0'35.941	
3 ^a - 1	0'39.923	0'39.923	218.182	0'40.229	0'40.229	209.303	0'41.557	0'41.557	210.117	0'40.245	0'40.245	215.140	0'40.443	0'40.443	214.286	0'41.197	0'41.197	214.712
3 ^a - 2	1'39.133	0'59.210		1'38.458	0'58.229		1'40.990	0'59.433		1'39.768	0'59.523		1'39.678	0'59.235		1'41.654	1'00.457	
3 ^a - 3	2'14.366	0'35.233		2'13.479	0'35.021		2'16.677	0'35.687		2'15.086	0'35.318		2'14.927	0'35.249		2'17.607	0'35.953	
4 ^a - 1	0'40.433	0'40.433	216.868	0'40.473	0'40.473	208.495	0'41.190	0'41.190	209.709	0'40.731	0'40.731	210.938	0'40.564	0'40.564	213.018	0'41.077	0'41.077	211.765
4 ^a - 2	1'39.725	0'59.292		1'38.845	0'58.372		1'40.831	0'59.641		1'40.280	0'59.549		1'39.811	0'59.247		1'40.772	0'59.695	
4 ^a - 3	2'15.090	0'35.365		2'14.184	0'35.339		2'16.745	0'35.914		2'15.658	0'35.378		2'15.519	0'35.708		2'16.431	0'35.659	
5 ^a - 1	0'40.293	0'40.293	219.067	0'40.736	0'40.736	208.898	0'41.938	0'41.938	210.117	0'40.716	0'40.716	213.862	0'42.238	0'42.238	212.599	0'41.180	0'41.180	213.018
5 ^a - 2	1'40.058	0'59.765		1'39.311	0'58.575		1'41.774	0'59.836		1'40.680	0'59.964		1'41.363	0'59.125		1'40.867	0'59.687	
5 ^a - 3	2'15.655	0'35.597		2'14.837	0'35.526		2'17.925	0'36.151		2'16.501	0'35.821		2'17.403	0'36.041		2'16.904	0'36.037	
6 ^a - 1	0'40.988	0'40.988	215.569	0'40.983	0'40.983	209.709	0'41.774	0'41.774	208.093	0'40.839	0'40.839	216.868	0'41.436	0'41.436	213.439	0'42.531	0'42.531	207.693
6 ^a - 2	1'40.661	0'59.673		1'39.703	0'58.720		1'42.087	1'00.313		1'40.914	1'00.075		1'41.543	1'00.107		2'01.553	1'19.022	
6 ^a - 3	2'16.283	0'35.622		2'14.898	0'35.195		2'18.130	0'36.043		2'16.406	0'35.492		2'16.897	0'35.354		2'49.436	0'47.883	PIT
7 ^a - 1	0'40.756	0'40.756	219.960	0'40.920	0'40.920	210.527	0'41.254	0'41.254	213.018	0'41.109	0'41.109	212.599	0'40.923	0'40.923	213.439			
7 ^a - 2	1'39.874	0'59.118		1'39.626	0'58.706		1'42.691	1'01.437		1'41.914	1'00.805		1'40.812	0'59.889				
7 ^a - 3	2'15.351	0'35.477		2'14.896	0'35.270		2'18.647	0'35.956		2'17.507	0'35.593		2'16.437	0'35.625				
8 ^a - 1	0'40.754	0'40.754	215.569	0'40.858	0'40.858	209.709	0'41.625	0'41.625	214.712	0'41.046	0'41.046	215.140	0'40.831	0'40.831	217.304			
8 ^a - 2	1'39.892	0'59.138		1'39.850	0'58.992		1'41.979	1'00.354		1'40.732	0'59.686		1'40.653	0'59.822				
8 ^a - 3	2'15.504	0'35.612		2'15.207	0'35.357		2'17.956	0'35.977		2'16.310	0'35.578		2'16.124	0'35.471				
9 ^a - 1	0'40.538	0'40.538	219.067	0'40.921	0'40.921	210.938	0'41.632	0'41.632	214.712	0'40.879	0'40.879	214.712	0'41.078	0'41.078	213.018			
9 ^a - 2	1'40.753	1'00.215		1'39.950	0'59.029		1'43.444	1'01.812		1'40.508	0'59.629		1'41.083	1'00.005				
9 ^a - 3	2'16.339	0'35.586		2'15.442	0'35.492		2'19.580	0'36.136		2'17.141	0'36.633		2'16.575	0'35.492				
10 ^a - 1	0'40.862	0'40.862	216.001	0'40.724	0'40.724	210.938	0'41.680	0'41.680	213.018	0'41.434	0'41.434	210.117	0'40.848	0'40.848	213.862			
10 ^a - 2	1'40.274	0'59.412		1'39.552	0'58.828		1'43.904	1'02.224		1'41.809	1'00.375		1'40.857	1'00.009				
10 ^a - 3	2'15.898	0'35.624		2'14.794	0'35.242		2'19.961	0'36.057		2'17.570	0'35.761		2'16.698	0'35.841				
11 ^a - 1	0'40.645	0'40.645	215.569	0'41.050	0'41.050	210.117	0'41.641	0'41.641	214.712	0'41.144	0'41.144	213.018	0'41.295	0'41.295	213.862			
11 ^a - 2	1'40.127	0'59.482		1'40.146	0'59.096		1'42.847	1'01.206		1'40.996	0'59.852		1'41.070	0'59.775				
11 ^a - 3	2'15.719	0'35.592		2'15.581	0'35.435		2'19.011	0'36.164		2'16.476	0'35.480		2'16.857	0'35.787				

Ideal Lap	
0'39.923	0'39.923
1'38.373	0'58.450
2'13.516	0'35.143

Ideal Lap	
0'40.229	0'40.229
1'38.181	0'57.954
2'13.187	0'35.004

Ideal Lap	
0'41.190	0'41.190
1'40.591	0'59.401
2'16.131	0'35.540

Ideal Lap	
0'40.245	0'40.245
1'39.768	0'59.523
2'15.086	0'35.318

Ideal Lap	
0'40.443	0'40.443
1'39.568	0'59.125
2'14.817	0'35.249

Ideal Lap	
0'41.045	0'41.045
1'40.659	0'59.614
2'16.181	0'35.522

Ideal Best Lap	
0'39.923	0'39.923
1'37.749	0'57.826
2'12.513	0'34.764



LAP ANALYSIS RACE - 1

On June, 6 - 7
Silverstone Circuit

Number	73			77			87			88		
Lap	Lap Time	Partial	Speed	Lap Time	Partial	Speed	Lap Time	Partial	Speed	Lap Time	Partial	Speed
1ª - 1	0'51.715	0'51.715	214.712	1'23.627	1'23.627		0'49.290	0'49.290	216.001	0'53.031	0'53.031	213.862
1ª - 2	1'52.917	1'01.202		3'08.244	1'44.617		1'50.241	1'00.951		1'56.689	1'03.658	
1ª - 3	2'29.012	0'36.095		3'44.292	0'36.048		2'25.553	0'35.312		2'32.646	0'35.957	
2ª - 1	0'41.473	0'41.473	215.569	0'42.638	0'42.638	208.093	0'40.630	0'40.630	218.624	0'41.233	0'41.233	210.527
2ª - 2	1'41.065	0'59.592		1'43.499	1'00.861		1'40.574	0'59.944		1'41.350	1'00.117	
2ª - 3	2'16.895	0'35.830		2'19.383	0'35.884		2'15.905	0'35.331		2'17.113	0'35.763	
3ª - 1	0'41.549	0'41.549	213.018	0'42.068	0'42.068	207.294	0'40.135	0'40.135	219.960	0'41.609	0'41.609	207.294
3ª - 2	1'42.081	1'00.532		1'42.013	0'59.945		1'38.935	0'58.800		1'41.442	0'59.833	
3ª - 3	2'18.678	0'36.597		2'17.997	0'35.984		2'14.321	0'35.386		2'17.097	0'35.655	
4ª - 1	0'42.113	0'42.113	210.117	0'42.412	0'42.412	208.495	0'40.448	0'40.448	217.304	0'41.583	0'41.583	207.693
4ª - 2	1'41.820	0'59.707		1'42.561	1'00.149		1'39.471	0'59.023		1'41.302	0'59.719	
4ª - 3	2'17.913	0'36.093		2'18.525	0'35.964		2'14.914	0'35.443		2'17.030	0'35.728	
5ª - 1	0'42.118	0'42.118	209.709	0'42.331	0'42.331	208.495	0'40.969	0'40.969	219.067	0'41.816	0'41.816	208.898
5ª - 2	1'42.134	1'00.016		1'42.524	1'00.193		1'41.188	1'00.219		1'41.824	1'00.008	
5ª - 3	2'18.311	0'36.177		2'18.615	0'36.091		2'16.992	0'35.804		2'17.869	0'36.045	
6ª - 1	0'42.404	0'42.404	209.709	0'41.893	0'41.893	208.898	0'40.837	0'40.837	216.433	0'41.723	0'41.723	211.765
6ª - 2	1'43.157	1'00.753		1'41.825	0'59.932		1'41.384	1'00.547		1'42.914	1'01.191	
6ª - 3	2'19.278	0'36.121		2'17.637	0'35.812		2'17.429	0'36.045		2'18.897	0'35.983	
7ª - 1	0'42.292	0'42.292	210.527	0'41.830	0'41.830	208.495	0'40.937	0'40.937	216.001	0'41.967	0'41.967	212.181
7ª - 2	1'43.303	1'01.011		1'41.822	0'59.992		1'41.084	1'00.147		1'43.722	1'01.755	
7ª - 3	2'19.333	0'36.030		2'17.610	0'35.788		2'16.787	0'35.703		2'19.730	0'36.008	
8ª - 1	0'42.111	0'42.111	210.117	0'41.839	0'41.839	209.303	0'41.053	0'41.053	213.862	0'41.689	0'41.689	211.765
8ª - 2	1'42.463	1'00.352		1'42.078	1'00.239		1'40.354	0'59.301		1'42.148	1'00.459	
8ª - 3	2'18.553	0'36.090		2'17.927	0'35.849		2'16.124	0'35.770		2'18.229	0'36.081	
9ª - 1	0'42.299	0'42.299	210.527	0'41.719	0'41.719	210.117	0'41.116	0'41.116	213.018	0'41.905	0'41.905	212.181
9ª - 2	1'43.956	1'01.657		1'42.175	1'00.456		1'40.848	0'59.732		1'43.438	1'01.533	
9ª - 3	2'20.221	0'36.265		2'18.041	0'35.866		2'16.598	0'35.750		2'20.458	0'37.020	
10ª - 1	0'41.950	0'41.950	212.181	0'41.832	0'41.832	210.117	0'41.019	0'41.019	216.433	0'41.531	0'41.531	213.862
10ª - 2	1'43.346	1'01.396		1'42.132	1'00.300		1'41.650	1'00.631		1'43.109	1'01.578	
10ª - 3	2'19.541	0'36.195		2'18.178	0'36.046		2'17.542	0'35.892		2'19.178	0'36.069	
11ª - 1	0'42.151	0'42.151	209.303	0'41.937	0'41.937	209.303	0'41.148	0'41.148	216.001	0'41.891	0'41.891	210.527
11ª - 2	1'42.356	1'00.205		1'42.393	1'00.456		1'41.350	1'00.202		1'42.884	1'00.993	
11ª - 3	2'18.529	0'36.173		2'18.560	0'36.167		2'17.494	0'36.144		2'21.000	0'38.116	

Ideal Lap	
0'41.473	0'41.473
1'41.065	0'59.592
2'16.895	0'35.830

Ideal Lap	
0'41.719	0'41.719
1'41.651	0'59.932
2'17.439	0'35.788

Ideal Lap	
0'40.135	0'40.135
1'38.935	0'58.800
2'14.247	0'35.312

Ideal Lap	
0'41.233	0'41.233
1'40.952	0'59.719
2'16.607	0'35.655

Ideal Best Lap	
0'39.923	0'39.923
1'37.749	0'57.826
2'12.513	0'34.764



RACE - 1 Sectors Results

Sector - 1			Sector - 2			Sector - 3			Ideal Lap vs Best Lap			
Ord.	Nº Driver	Time	Nº Driver	Time	Nº Driver	Time	Ord.	Nº Driver	Ideal Lap	Best Lap	Ord.	
1	33 Jordi Oriola	39.923	6 Mikel Azcona	57.826	2 Manuel Giau	34.764	1	6 Mikel Azcona	2'12.820	2'13.066	1	
2	2 Manuel Giau	40.130	34 Stian Paulsen	57.954	6 Mikel Azcona	34.821	2	34 Stian Paulsen	2'13.187	2'13.395	2	
3	87 Edina Bús	40.135	1 Pol Rosell	58.077	22 Alexander Morgan	34.955	3	1 Pol Rosell	2'13.429	2'13.584	3	
4	6 Mikel Azcona	40.173	33 Jordi Oriola	58.450	1 Pol Rosell	34.991	4	33 Jordi Oriola	2'13.516	2'13.774	4	
5	3 Julien Briché	40.197	3 Julien Briché	58.562	34 Stian Paulsen	35.004	5	2 Manuel Giau	2'13.642	2'13.980	6	
6	22 Alexander Morgan	40.213	22 Alexander Morgan	58.686	3 Julien Briché	35.013	6	3 Julien Briché	2'13.772	2'13.808	5	
7	11 Jürgen Schmarl	40.221	2 Manuel Giau	58.748	28 Fran Rueda	35.085	7	22 Alexander Morgan	2'13.854	2'14.379	9	
8	34 Stian Paulsen	40.229	87 Edina Bús	58.800	11 Jürgen Schmarl	35.115	8	87 Edina Bús	2'14.247	2'14.321	8	
9	46 Zsolt Dávid Szabó	40.245	20 Lourenço Beirão Da Veiga	58.814	33 Jordi Oriola	35.143	9	11 Jürgen Schmarl	2'14.259	2'14.259	7	
10	8 Jonathan Cocker	40.296	28 Fran Rueda	58.832	20 Lourenço Beirão Da Veiga	35.174	10	28 Fran Rueda	2'14.267	2'14.393	10	
11	5 Thibaut Mourgues	40.297	8 Jonathan Cocker	58.890	8 Jonathan Cocker	35.197	11	8 Jonathan Cocker	2'14.383	2'14.485	12	
12	28 Fran Rueda	40.350	11 Jürgen Schmarl	58.923	12 Dejan Bulatovic	35.227	12	20 Lourenço Beirão Da Veiga	2'14.414	2'14.442	11	
13	1 Pol Rosell	40.361	5 Thibaut Mourgues	58.961	61 Mario Dablander	35.249	13	5 Thibaut Mourgues	2'14.548	2'14.876	13	
14	20 Lourenço Beirão Da Veiga	40.426	12 Dejan Bulatovic	58.977	5 Thibaut Mourgues	35.290	14	61 Mario Dablander	2'14.817	2'14.927	14	
15	61 Mario Dablander	40.443	9 Lucile Cypriano	59.053	87 Edina Bús	35.312	15	12 Dejan Bulatovic	2'14.985	2'14.985	15	
16	24 Andrina Gugger	40.462	24 Andrina Gugger	59.105	46 Zsolt Dávid Szabó	35.318	16	9 Lucile Cypriano	2'15.008	2'15.131	17	
17	9 Lucile Cypriano	40.563	61 Mario Dablander	59.125	9 Lucile Cypriano	35.392	17	46 Zsolt Dávid Szabó	2'15.086	2'15.086	16	
18	12 Dejan Bulatovic	40.781	7 Michel Zemp	59.140	23 Stefano Zanini	35.414	18	24 Andrina Gugger	2'15.123	2'15.195	18	
19	23 Stefano Zanini	40.798	23 Stefano Zanini	59.231	21 Marie Baus - Coppens	35.419	19	23 Stefano Zanini	2'15.443	2'15.443	19	
20	7 Michel Zemp	40.885	21 Marie Baus - Coppens	59.278	7 Michel Zemp	35.462	20	7 Michel Zemp	2'15.487	2'15.846	20	
21	17 Mladen Lalusic	40.893	37 Dominik Fekete	59.401	67 Marco Pellegrini	35.522	21	21 Marie Baus - Coppens	2'15.972	2'16.300	22	
22	67 Marco Pellegrini	41.045	10 Mauricio Hernandez	59.425	37 Dominik Fekete	35.540	22	37 Dominik Fekete	2'16.131	2'16.283	21	
23	37 Dominik Fekete	41.190	46 Zsolt Dávid Szabó	59.523	24 Andrina Gugger	35.556	23	67 Marco Pellegrini	2'16.181	2'16.431	23	
24	88 Finlay Crocker	41.233	73 Mateu Clement	59.592	88 Finlay Crocker	35.655	24	10 Mauricio Hernandez	2'16.466	2'16.466	24	
25	10 Mauricio Hernandez	41.255	67 Marco Pellegrini	59.614	10 Mauricio Hernandez	35.786	25	88 Finlay Crocker	2'16.607	2'17.030	26	
26	21 Marie Baus - Coppens	41.275	88 Finlay Crocker	59.719	17 Mladen Lalusic	35.787	26	17 Mladen Lalusic	2'16.676	2'17.053	27	
27	73 Mateu Clement	41.473	77 Navarro Jean-Laurent	59.932	77 Navarro Jean-Laurent	35.788	27	73 Mateu Clement	2'16.895	2'16.895	25	
28	77 Navarro Jean-Laurent	41.719	17 Mladen Lalusic	59.996	73 Mateu Clement	35.830	28	77 Navarro Jean-Laurent	2'17.439	2'17.610	28	

Silverstone Circuit

On June, 6 - 7

RACE - 1 MAXIMUM SPEED

Ord.	Nº	Entrant	Nat.	Driver	Nat.	Vehicle	Km/h
1	11	TARGET, SRL	AUT	Jürgen Schmarl	AUT	SEAT Leon Cup Racer MK3	222.681
2	5	THIBAUT MOURGUES	FRA	Thibaut Mourgues	FRA	SEAT Leon Cup Racer MK3	220.409
3	9	LUCILE CYPRIANO	FRA	Lucile Cypriano	FRA	SEAT Leon Cup Racer MK3	220.409
4	33	TARGET, SRL	ESP	Jordi Oriola	ESP	SEAT Leon Cup Racer MK3	219.960
5	87	B3 HUNGARY KFT	HUN	Edina Bús	HUN	SEAT Leon Cup Racer MK3	219.960
6	2	BAPORO MOTORSPORT	PRT	Manuel Gao	PRT	SEAT Leon Cup Racer MK3	219.067
7	28	MONLAU COMPETICIÓN	ESP	Fran Rueda	ESP	SEAT Leon Cup Racer MK3	219.067
8	67	MARCO PELLEGRINI	ITA	Marco Pellegrini	ITA	SEAT Leon Cup Racer MK3	219.067
9	10	TARGET, SRL	CRI	Mauricio Hernandez	CRI	SEAT Leon Cup Racer MK3	218.182
10	20	LOURENÇO BEIRÃO	PRT	Lourenço Beirão Da Veiga	PRT	SEAT Leon Cup Racer MK3	218.182
11	3	JULIEN BRICHÉ	FRA	Julien Briché	FRA	SEAT Leon Cup Racer MK3	217.742
12	8	WOLF-POWER RACING	GBR	Jonathan Cocker	GBR	SEAT Leon Cup Racer MK3	217.742
13	21	MARIE BAUS-COPPENS	FRA	Marie Baus - Coppens	FRA	SEAT Leon Cup Racer MK3	217.742
14	22	BAPORO MOTORSPORT	GBR	Alexander Morgan	GBR	SEAT Leon Cup Racer MK3	217.742
15	24	TARGET, SRL	CHE	Andrina Gugger	CHE	SEAT Leon Cup Racer MK3	217.304
16	46	ZENGÖ MOTORSPORT KFT	HUN	Zsolt Dávid Szabó	HUN	SEAT Leon Cup Racer MK3	217.304
17	61	SEAT AUSTRIA	AUT	Mario Dablender	AUT	SEAT Leon Cup Racer MK3	217.304
18	7	WOLF-POWER RACING	CHE	Michel Zemp	CHE	SEAT Leon Cup Racer MK3	216.868
19	17	LEIN RACING	SRB	Mladen Lalusic	SRB	SEAT Leon Cup Racer MK3	216.868
20	1	BAPORO MOTORSPORT	ESP	Pol Rosell	ESP	SEAT Leon Cup Racer MK3	216.001
21	12	LEIN RACING	MNE	Dejan Bulatovic	MNE	SEAT Leon Cup Racer MK3	215.569
22	73	MATEU CLEMENT	FRA	Mateu Clement	FRA	SEAT Leon Cup Racer MK3	215.569
23	23	STEFANO ZANINI	MCO	Stefano Zanini	MCO	SEAT Leon Cup Racer MK3	215.140
24	37	B3 HUNGARY KFT	HUN	Dominik Fekete	HUN	SEAT Leon Cup Racer MK3	214.712
25	6	PCR SPORT	ESP	Mikel Azcona	ESP	SEAT Leon Cup Racer MK3	214.286
26	88	FINLAY CROCKER	GBR	Finlay Crocker	GBR	SEAT Leon Cup Racer MK3	213.862
27	34	STIAN PAULSEN RACING	NOR	Stian Paulsen	NOR	SEAT Leon Cup Racer MK3	210.938
28	77	NAVARRO JEAN-LAURENT	FRA	Navarro Jean-Laurent	FRA	SEAT Leon Cup Racer MK3	210.117

On June, 6 - 7
Silverstone Circuit

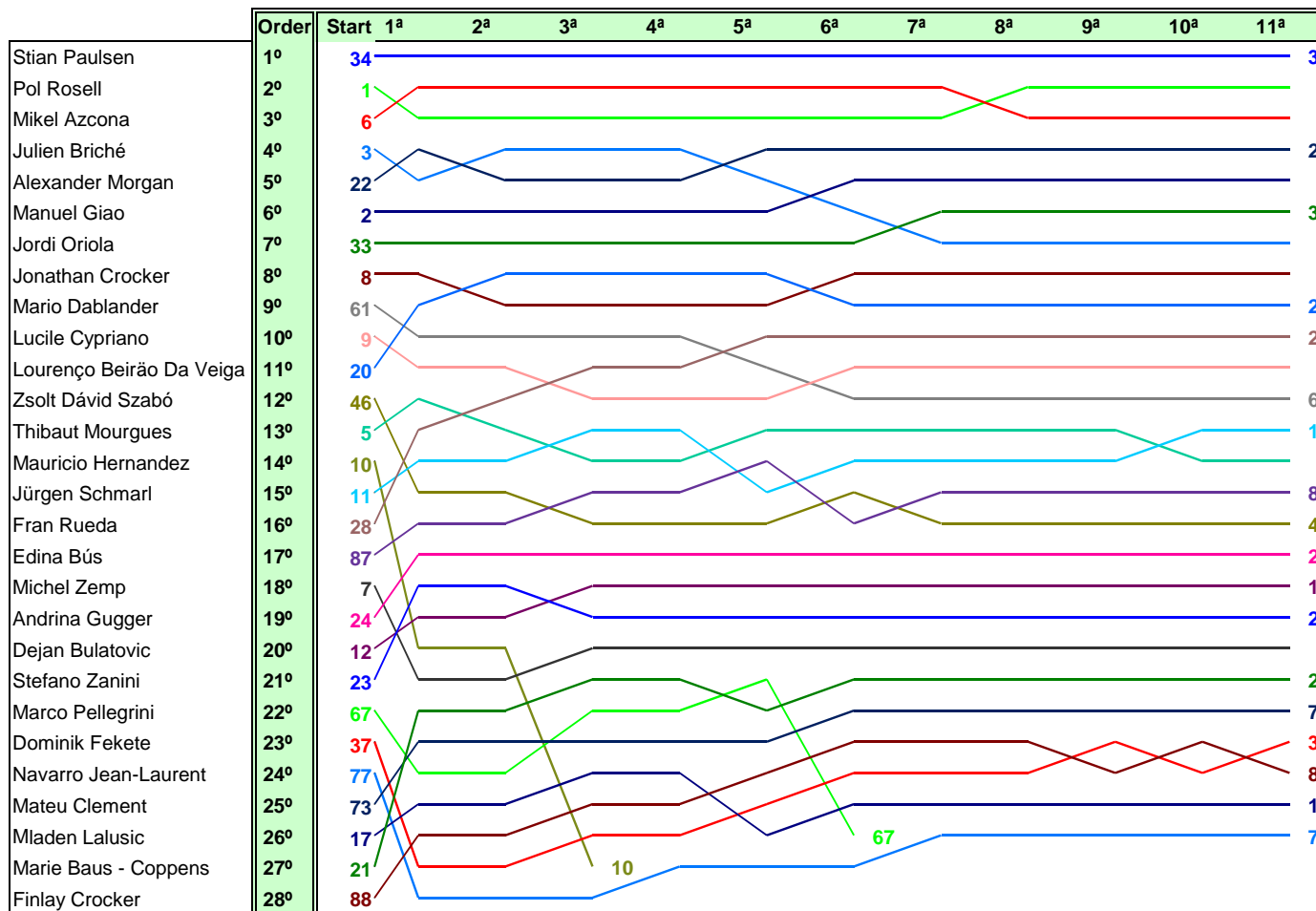
LAP CHART RACE - 1

Order	Start	GAP / LT	1ª	GAP / LT	2ª	GAP / LT	3ª	GAP / LT	4ª	GAP / LT	5ª	GAP / LT	6ª	GAP / LT	7ª	GAP / LT	8ª	GAP / LT	9ª	GAP / LT	10ª	GAP / LT	11ª	GAP / LT	
1º	34	2'12.104	34	2'17.252	34	2'13.395	34	2'13.479	34	2'14.184	34	2'14.837	34	2'14.898	34	2'14.896	34	2'15.207	34	2'15.442	34	2'14.794	34	2'15.581	
2º	1	0'060 2'12.164	6	0.846 2'18.098	6	0.517 2'13.066	6	0.932 2'13.894	6	0.901 2'14.153	6	0.660 2'14.596	6	0.886 2'15.124	6	1.245 2'15.255	1	1.686 2'14.932	1	1.176 2'14.932	1	1.041 2'14.659	1	0.576 2'15.116	
3º	6	0'358 2'12.462	1	1.555 2'18.807	1	1.744 2'13.584	1	2.050 2'13.785	1	1.976 2'14.11	1	1.725 2'14.586	1	2.072 2'15.245	1	1.776 2'14.6	6	2.163 2'16.125	6	2.757 2'16.036	6	3.603 2'15.64	6	4.806 2'16.784	
4º	3	0'367 2'12.471	22	2.072 2'19.324	3	2.800 2'13.808	3	3.459 2'14.138	3	4.321 2'15.046	22	5.620 2'15.611	22	6.605 2'15.883	22	7.174 2'15.465	22	7.697 2'15.73	22	8.115 2'15.86	22	9.474 2'16.153	22	9.976 2'16.083	
5º	22	0'650 2'12.754	3	2.387 2'19.639	22	3.056 2'14.379	22	4.086 2'14.509	22	4.846 2'14.944	3	6.010 2'16.526	2	6.983 2'15.59	2	7.615 2'15.528	2	8.286 2'15.878	2	9.310 2'16.466	2	9.875 2'15.359	2	10.429 2'16.135	
6º	2	0'692 2'12.796	2	2.971 2'20.223	2	3.556 2'13.98	2	4.510 2'14.433	2	5.10 2'15.055	2	6.291 2'15.747	3	7.830 2'16.718	33	8.458 2'15.351	33	8.755 2'15.504	33	9.652 2'16.339	33	10.756 2'15.719	33	10.894 2'15.719	
7º	33	0'772 2'12.876	33	3.628 2'20.88	33	4.007 2'13.774	33	4.894 2'14.366	33	5.800 2'15.09	33	6.618 2'15.655	33	8.003 2'16.283	33	8.786 2'15.852	3	9.483 2'15.904	3	10.318 2'16.277	3	11.555 2'16.031	3	12.632 2'16.658	
8º	8	0'786 2'12.890	8	4.922 2'22.174	20	6.141 2'14.442	20	7.108 2'14.446	20	8.298 2'15.374	20	9.425 2'15.964	8	12.324 2'17.482	8	13.329 2'15.901	8	13.733 2'15.611	8	13.872 2'15.581	8	14.895 2'15.817	8	15.071 2'15.757	
9º	61	0'855 2'12.959	20	5.094 2'22.346	8	6.824 2'15.297	8	7.830 2'14.885	8	8.690 2'15.044	8	9.740 2'15.887	20	12.691 2'18.164	20	13.799 2'16.004	20	14.555 2'15.963	20	15.311 2'16.198	20	16.678 2'16.161	20	17.636 2'16.539	
10º	9	0'941 2'13.045	61	5.428 2'22.68	61	7.287 2'15.254	61	8.735 2'14.927	61	10.070 2'15.519	28	12.489 2'17.045	28	13.874 2'16.283	28	15.042 2'16.064	28	15.936 2'16.101	28	16.569 2'16.075	28	17.678 2'15.903	28	18.297 2'16.2	
11º	20	1'032 2'13.136	9	5.657 2'22.909	9	5.759 2'15.317	28	9.431 2'14.393	28	10.281 2'15.034	61	12.637 2'17.404	9	14.298 2'16.298	9	15.735 2'16.333	9	16.794 2'16.266	9	17.426 2'16.074	9	19.241 2'16.609	9	20.416 2'16.756	
12º	46	1'136 2'13.240	5	6.765 2'24.017	28	8.517 2'14.748	9	9.741 2'15.641	9	10.688 2'15.131	9	12.898 2'17.047	61	14.636 2'16.897	61	16.177 2'16.437	61	17.094 2'16.124	61	18.227 2'16.575	61	20.131 2'16.898	61	21.407 2'16.857	
13º	5	1'277 2'13.381	28	7.164 2'24.416	5	9.610 2'16.24	11	10.826 2'14.259	11	11.368 2'14.726	5	13.764 2'16.617	5	15.296 2'16.43	5	16.437 2'16.17	5	18.360 2'16.997	5	20.102 2'17.184	5	22.757 2'17.174	11	23.942 2'16.766	
14º	10	1'361 2'13.465	11	7.357 2'24.609	11	10.046 2'16.084	5	11.292 2'15.161	5	11.368 2'14.876	87	14.538 2'16.992	11	15.608 2'15.62	11	16.783 2'16.071	11	18.524 2'16.948	11	20.377 2'17.295	5	23.109 2'17.801	5	24.771 2'17.243	
15º	11	1'404 2'13.508	46	8.134 2'25.386	46	10.535 2'15.796	87	11.653 2'14.321	87	12.383 2'14.914	11	14.886 2'18.355	46	16.788 2'16.406	87	18.960 2'16.787	87	19.877 2'16.124	87	21.033 2'16.598	87	23.781 2'17.542	87	25.694 2'17.494	
16º	28	1'422 2'13.526	87	8.301 2'25.553	87	10.811 2'15.905	46	12.142 2'15.086	46	13.616 2'15.658	46	15.280 2'16.501	87	17.069 2'17.429	46	19.399 2'17.507	46	20.502 2'16.31	46	22.201 2'17.141	46	24.977 2'17.57	46	25.872 2'16.476	
17º	87	1'605 2'13.709	24	9.176 2'26.428	24	11.273 2'15.492	24	12.989 2'15.195	24	14.589 2'15.784	24	15.845 2'16.093	24	17.322 2'16.375	24	19.399 2'17.513	24	21.320 2'16.588	24	22.456 2'16.578	24	25.398 2'17.736	24	26.659 2'16.842	
18º	7	1'622 2'13.726	23	9.546 2'26.798	23	11.594 2'15.443	12	14.421 2'16.127	12	16.183 2'15.946	12	17.965 2'16.619	12	20.226 2'17.159	12	22.256 2'16.926	12	23.500 2'16.601	12	25.133 2'16.925	12	26.859 2'16.52	12	28.671 2'17.393	
19º	24	2'071 2'14.175	12	10.183 2'27.435	12	11.773 2'14.985	23	15.128 2'17.013	23	17.382 2'16.438	23	19.607 2'17.062	23	21.772 2'17.063	23	23.334 2'16.458	23	24.198 2'16.071	23	25.585 2'16.829	23	27.658 2'16.867	23	29.203 2'17.126	
20º	12	2'217 2'14.321	10	10.410 2'27.662	10	13.481 2'16.466	7	16.116 2'15.846	7	17.977 2'16.045	7	20.077 2'16.937	7	22.417 2'17.238	7	24.338 2'16.817	7	25.539 2'16.408	7	27.509 2'17.412	7	29.623 2'16.905	7	30.297 2'16.255	
21º	23	2'227 2'14.331	7	10.765 2'28.017	7	13.749 2'16.379	21	18.152 2'17.715	21	20.710 2'16.742	67	24.198 2'16.904	21	28.481 2'18.844	21	31.741 2'18.156	21	34.138 2'17.604	21	36.249 2'17.553	21	40.253 2'18.798	21	42.752 2'18.08	
22º	67	2'836 2'14.940	21	11.011 2'28.263	21	13.916 2'16.3	67	19.884 2'17.607	67	22.131 2'16.431	21	24.535 2'18.662	73	32.042 2'19.278	73	36.479 2'19.333	73	39.825 2'18.553	73	44.604 2'20.221	73	49.351 2'19.541	73	52.299 2'18.529	
23º	37	3'627 2'15.731	73	11.760 2'29.012	73	15.260 2'16.895	73	20.459 2'18.678	73	24.188 2'17.913	73	27.662 2'18.311	88	32.607 2'18.897	88	37.441 2'19.73	88	40.463 2'18.229	37	45.006 2'19.58	88	49.863 2'19.178	37	53.603 2'19.011	
24º	77	4'034 2'16.138	67	12.551 2'29.803	67	15.756 2'16.6	17	20.589 2'17.252	17	24.715 2'18.31	88	28.608 2'17.869	37	34.368 2'18.13	37	38.119 2'17.956	37	40.868 2'20.458	88	45.479 2'20.261	37	50.173 2'19.961	88	55.282 2'24.252	
25º	73	4'275 2'16.379	17	13.158 2'30.41	17	16.816 2'17.053	88	22.730 2'17.097	88	25.576 2'17.03	37	31.136 2'17.925	17	39.785 2'20.583	17	45.153 2'20.264	17	50.207 2'20.261	17	56.601 2'21.826	17	1'03.762 2'21.955	17	1'12.433 2'24.252	
26º	17	4'374 2'16.478	88	15.394 2'32.646	88	19.112 2'17.113	37	25.487 2'16.677	37	28.048 2'16.745	17	34.100 2'24.222	67	58.736 2'49.436	77	1'51.118 2'17.61	77	1'53.838 2'17.927	77	1'56.437 2'18.041	77	1'59.821 2'18.178	77	2'02.800 2'18.56	
27º	21	4'560 2'16.664	37	19.401 2'36.653	37	22.289 2'16.283	10	27.476 2'27.474	77	1'41.887 2'18.525	77	1'45.665 2'18.615	77	1'48.404 2'17.637											
28º	88	4'898 2'17.002	77	1'27.040 3'44.292	77	1'33.028 2'19.383	77	1'37.546 2'17.997																	

Silverstone Circuit

On June, 6 - 7

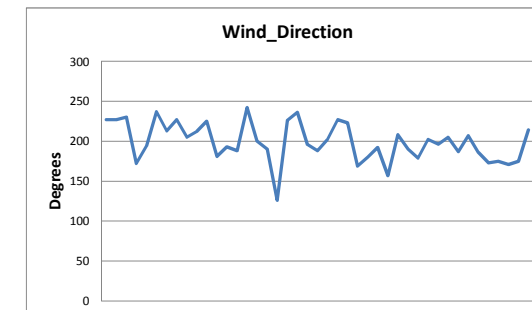
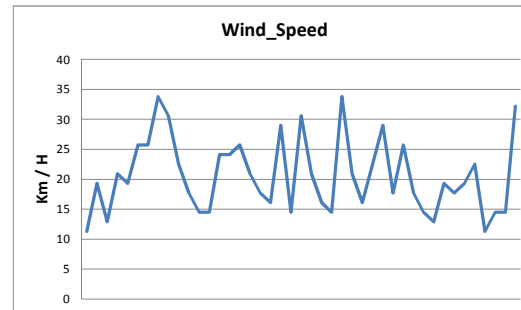
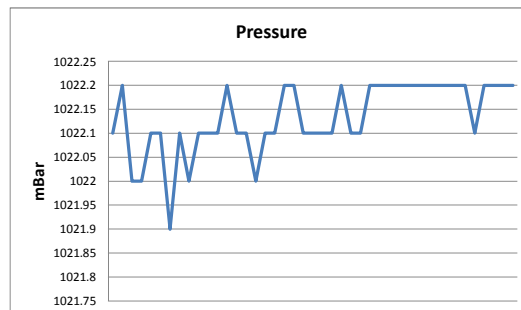
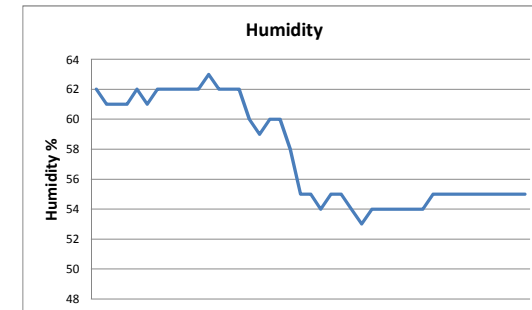
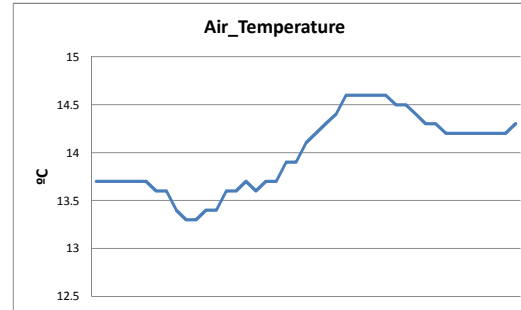
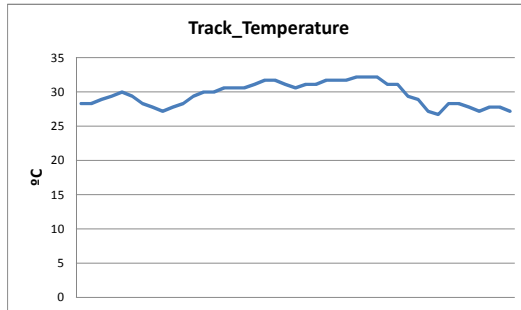
RACE - 1 GRAPHIC LAP CHART



WEATHER REPORT RACE - 1

Silverstone Circuit
On June, 6 - 7

Track Status



Santísima Trinidad 30 28010 MADRID
Tel y Fax 91.448.32.06
www.cronococa.com
e-mail: info@cronococa.com



Juan Bravo 17 28006 MADRID
Tel 91.432.27.50
www.gt sport.es
e-mail: info@gt sport.es